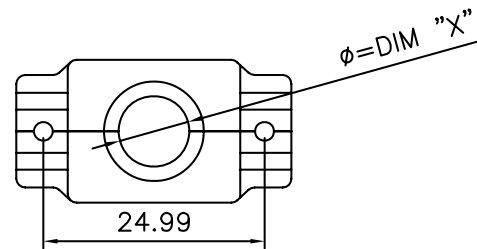
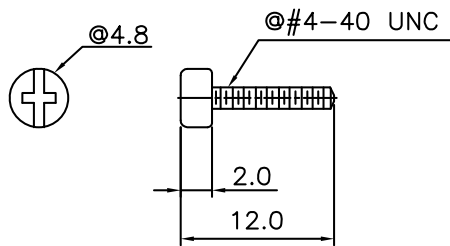
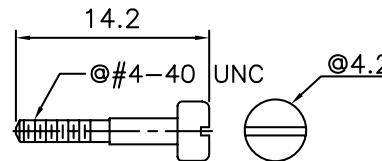
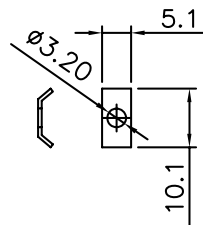
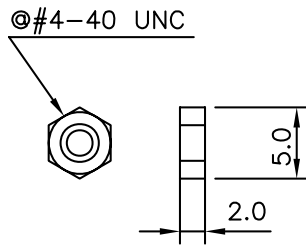


NOTE:  
 MATERIAL: zinc alloy  
 FINISHED: chromate plated



CABLE ENTRY SIZE:  
 DIMENSION OF "X"  
 A=6.0mm  
 B=7.0mm  
 C=8.0mm  
 D=9.5mm



RoHS Compliant

TOLERANCES ARE

**MORETHANALL**  
 PCB CONNECTORS  
 Cable ASSEMBLIES

煜倫股份有限公司

www.morethanall.com

DRAWING BY CY

CHECKED BY GENIUS

UNIT / mm

SCALE 1 : 1

DATE

SIZE A4

PJECTION

X, ±  
 .X ±  
 .XX ±  
 .XXX ±  
 ANG ±



ORDER INFORMATION

DHA-N1Dxx-09-LF  
 SERIES | 09WAY LEADFREE  
 D06: CABLE DIA 6.0mm  
 D07: CABLE DIA 7.0mm  
 NICKEL :  
 SINGLE PACKING

DESCRIPTION: D-SUB 鑄鐵殼UA TYPE 09 PIN,UA型,短螺絲