

TECHNICAL CHARACTERISTICS

1. General Characteristics

Dimension: 31.00L x 25.00W x 3.00H mm

Weight: Appro x. 5.20 g

Contact principle: Friction technology

Operating position: Shaft up / Down / Horizontal

Mounting System: SMT Type (without post)

Durability: 10,000 cycles min.

2. Mechanical Characteristics

Insulation material: Thermoplastic, UL 94V-0

3. Electrical Characteristics

Number of contacts: 6, 8 pins (optional)

Contact resistance: 60 m ohm Typical, 100 m ohm Max.

Insulation resistance: >1000 M OHM / 500 VDC

Switch T ype: Blade

Operation: Closed on card holder inserted

4. Solderability

Wave: Not applicable

IR reflow: 230°C, 10 sec. Max.

Manual soldering: 330°C, 3 sec. Max.

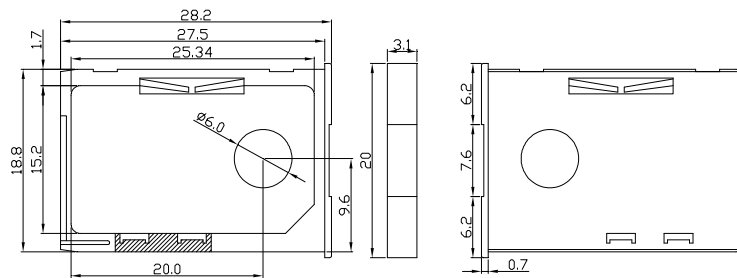
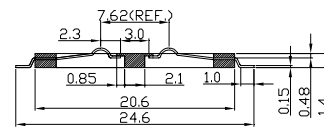
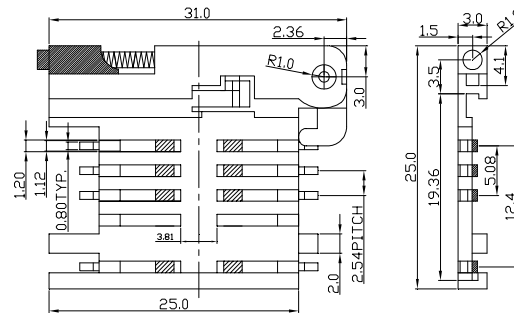
5. Environmental Characteristics

Operating temperature: - 25°C ~ + 85°C

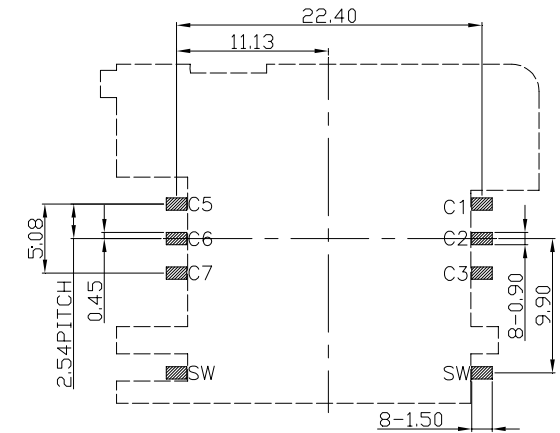
Operating humidity: 10 % ~ 95 % RH

Storage temperature: - 25°C ~ + 85°C

Storage humidity: 10 % ~ 95 % RH



Unit: mm; Tolerances: ± 0.15 mm
Mechanical outline dimension



Unit: mm; Tolerances: ± 0.15 mm
Reference dimension for PCB layout

RoHS Compliant

TOLERANCES ARE

MORETHANALL
PCB CONNECTORS
Cable ASSEMBLIES

DRAWING BY CY

X. \pm

CHECKED BY GENIUS

.X \pm

UNIT / mm

SCALE 1 : 1

.XX \pm

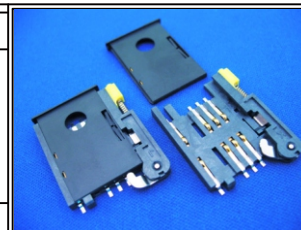
DATE

.XXX \pm

ANG \pm

SIZE A4

P PROJECTION



ORDER INFORMATION

SCE-W2231-06-LF
SERIES | | LEADFREE
| | 06 WAY
| | LONG 31.0mm
| | PAD TO PAD 22.40mm
90°SMT

DESCRIPTION:

煜倫股份有限公司

www.morethanall.com