

Technical Data:

Material:

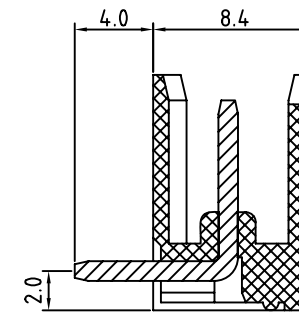
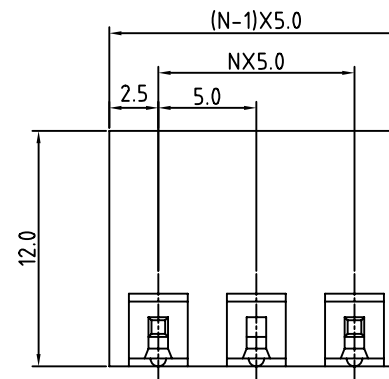
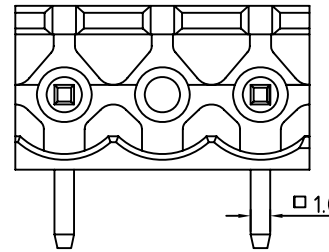
- Solder Pin: Brass with Tin plated
- Insulator body(housing): Polyamide(Glass filled)(UL94V-0)

Electrical

- Voltage rating: 300VAC
- Current rating: 10A
- Insulation resistance: 500M $\Omega$ at DC 500V
- Withstanding Voltage: AC 1500V(1min)

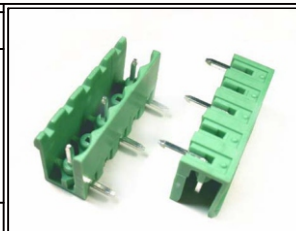
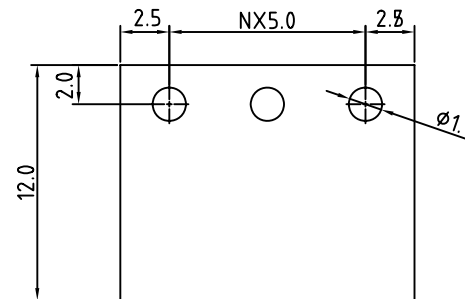
Mechanical:

- Using temperature Range: -40°C to +105°C
- Soldering temperature:+250°,5seconds Max.



N=Number of contacts

PCB. LAYOUT



RoHS Compliant

TOLERANCES ARE

**MORETHANALL**  
PCB CONNECTORS  
Cable ASSEMBLIES

煜倫股份有限公司

www.morethanall.com

DRAWING BY CY

CHECKED BY GENIUS

UNIT / mm SCALE 1 : 1

DATE

SIZE A4

PJECTION

X.  $\pm$   
.X  $\pm$   
.XX  $\pm$   
.XXX  $\pm$   
ANG  $\pm$

ORDER INFORMATION

TBH050-PREE-xx-LF

SERIES | LEADFREE  
02~12  
EMPTY EVEN  
DIP 90°  
MALE

DESCRIPTION: 5.0mm 90度 / OPEN SERIES