

SPECIFICATIONS

Electrical

Current Rating: 5A AC, DC

Voltage Rating: 250V AC, DC

Operating Temp.: -25°C ~ +85°C

Insulation Resistance: 1000MΩ / min.

Dielectric Withstanding Voltage: 1500V AC / min.

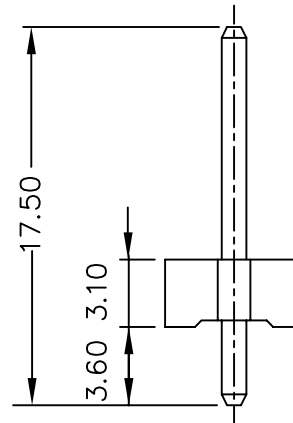
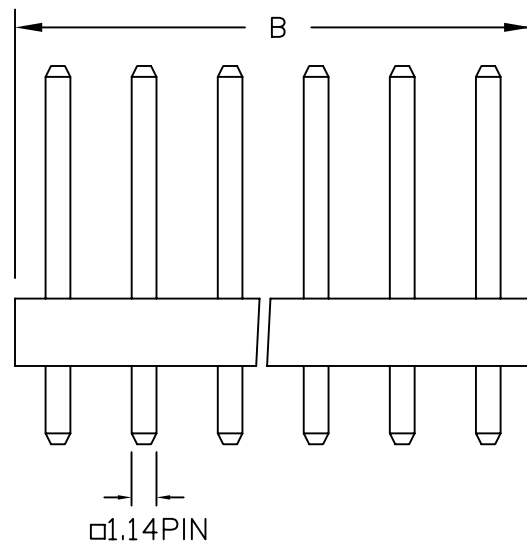
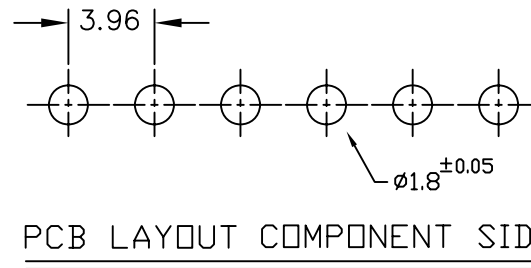
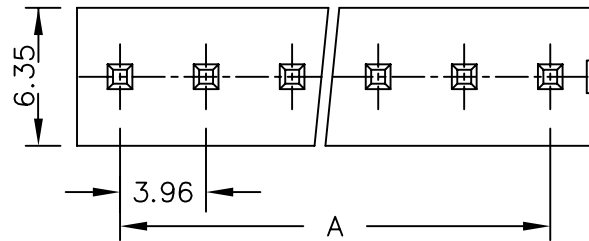
Contact Resistance: 10mΩ / max.

Material

Material: Nylon66, UL94V-2

KX-D-xx-LF
LEADFREE

RoHS Compliant



Poles	Dimension mm (in.)		Part No.
	A	B	
2	3.96	8.00	KX-D-02
3	7.92	12.00	KX-D-03
4	11.88	15.90	KX-D-04
5	15.84	20.00	KX-D-05
6	19.80	24.00	KX-D-06
7	23.76	27.90	KX-D-07
8	27.72	31.90	KX-D-08
9	31.86	35.80	KX-D-09
10	35.64	39.90	KX-D-10
11	39.60	43.90	KX-D-11
12	43.56	47.80	KX-D-12
13	47.52	51.80	KX-D-13
14	51.48	55.70	KX-D-14
15	55.44	59.80	KX-D-15
16	59.40	63.80	KX-D-16
17	63.36	67.70	KX-D-17
18	67.32	71.70	KX-D-18
19	71.28	75.60	KX-D-19
20	75.24	79.80	KX-D-20

MORETHANALL
CONNECTORS
ASSEMBLIES

PART NO. KX-D-xx

DWG NO. KX-D-xx

FILE NO.

UNIT / mm

SCALE 1:1

CHECKED BY CY

DRAWING BY

PROJECTION



TOLERANCES ARE

.X ±0.5
.XX ±0.35
.XXX
AWG

DESCRIPTION:

3.96mm Wire-to-Board Header
Dip 180° Type

AREA

REVISIONS

HK

DATE

焯倫股份有限公司