

11	Half Lock	1	Stainless Steel
10	Wing Ear	2	Copper Alloy, Selective Au Plating
9	Shell	1	Stainless Steel
8	Slider Lock Pin	1	Stainless Steel
7	Spring	1	SWP
6	Detect Switch Contact	1	Copper Alloy, Selective Au Plating
5	Protect Switch Contact	1	Copper Alloy, Selective Au Plating
4	Protect and Detect Switch Contact	1	Copper Alloy, Selective Au Plating
3	Contact	9	Copper Alloy, Selective Au Plating
2	Ejector	1	Thermoplastic UL 94V-0, Black
1	Housing	1	Thermoplastic UL 94V-0, Black
No.	Name	QTY	Material

MORETHANALL
CONNECTORS
ASSEMBLIES

PART NO. SDC-W24PA-09

DWG NO. SDC-W24PA-09

CHECKED BY CY

TOLERANCES ARE

煜倫股份有限公司

FILE NO.

DRAWING BY

.X ± 0.2

.XX ± 0.1

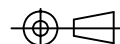
DESCRIPTION:

SD Memory Card Conn.
Push-Push Reverse (0.3H) Type

UNIT / mm

SCALE 1:1

PROJECTION



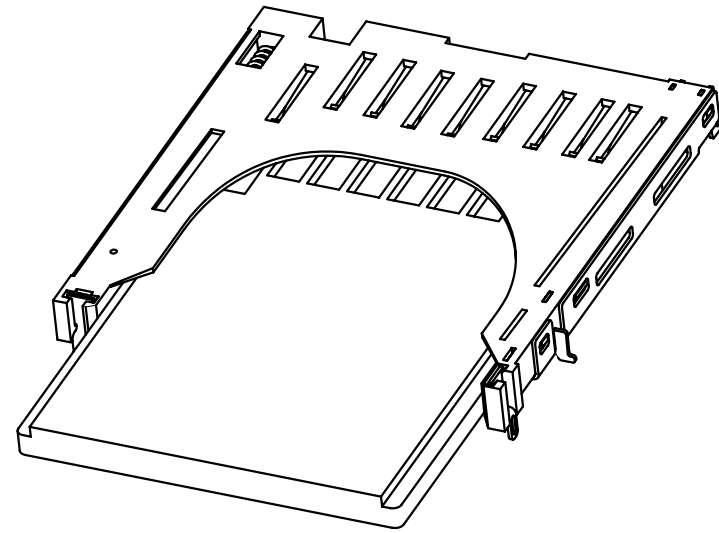
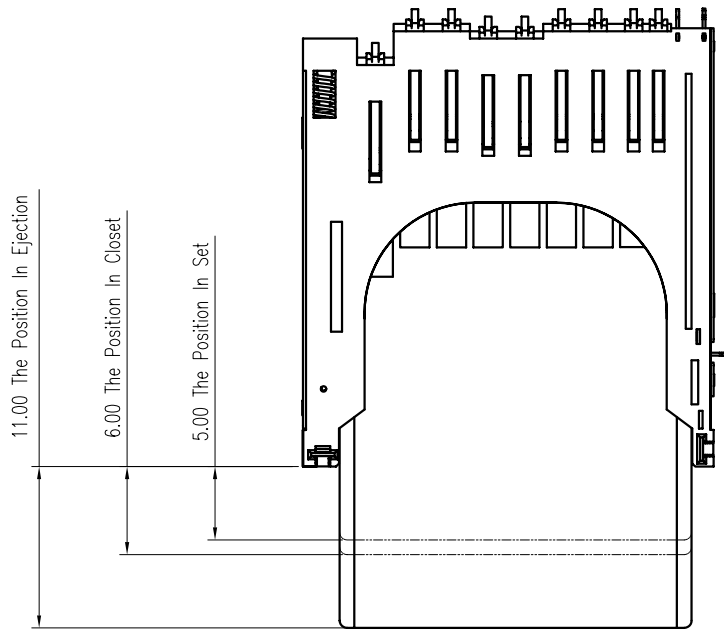
.XXX ±
AWG

AREA

REVISIONS

HK

DATE



Notes:

1.Contact and Switch Coplanarity to be 0.12mm Max.

2.Opening/Close of Each Switch:

	Protect Contact		Detect Contact
	Write Protect Position	Write Enable Position	
Card Uninsertion	Open	Open	Open
Card Half Insertion	Close	Close	Open
Card Insertion	Open	Close	Close

3.When Delivering The Push / Push Mechanism is in the State of The Unlock. (Card Dashing Out Position)

MORETHANALL
CONNECTORS
ASSEMBLIES

PART NO. SDC-W24PA-09

DWG NO. SDC-W24PA-09

FILE NO.

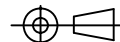
UNIT / mm

SCALE 1:1

CHECKED BY CY

DRAWING BY

PROJECTION



TOLERANCES ARE

.X ± 0.2
.XX ± 0.1
.XXX ±
AWG

DESCRIPTION:

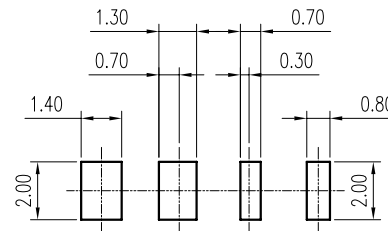
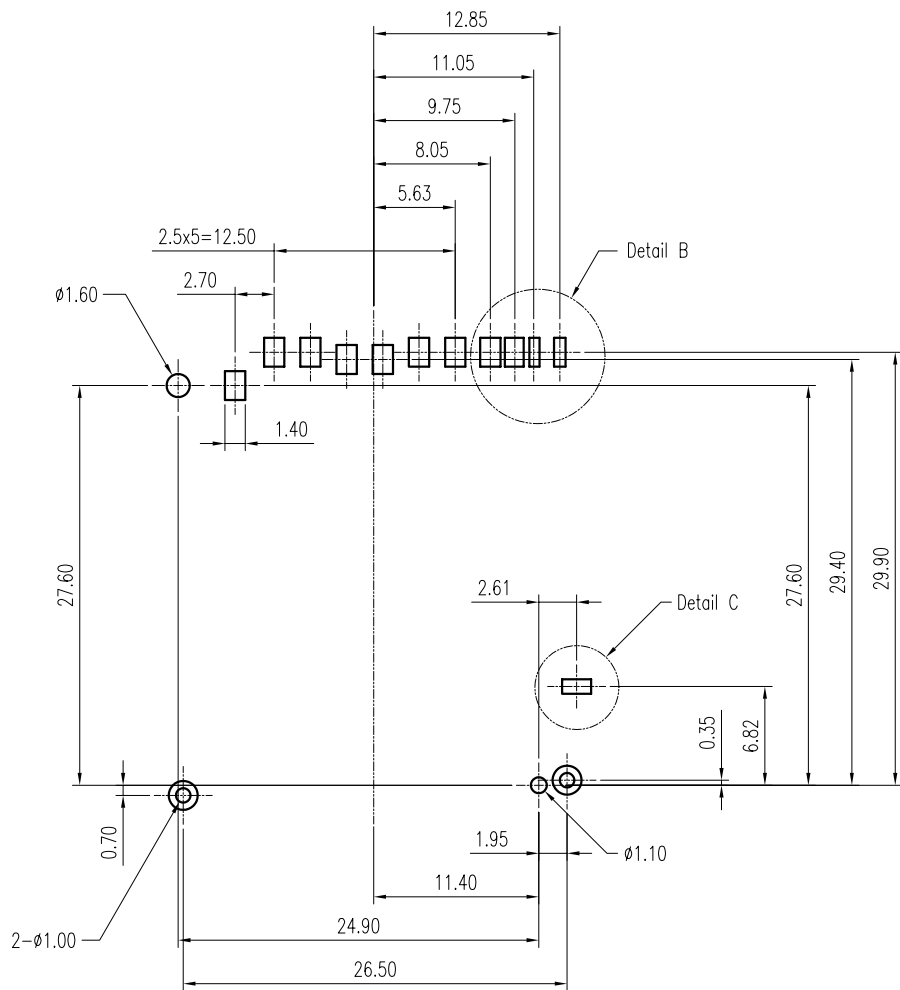
AREA

REVISIONS

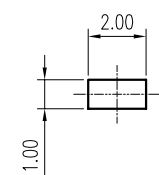
HK

DATE

煜倫股份有限公司



Detail B
Scale 4:1



Detail C
Scale 4:1

SDC-W24PA-09-LF
LEADFREE
RoHS Compliant

Recommended P.C.B. Layout
Layout Tolerance = ± 0.05 mm



PART NO. SDC-W24PA-09

DWG NO. SDC-W24PA-09

CHECKED BY CY

TOLERANCES ARE

DESCRIPTION:

SD Memory Card Conn.
Push-Push Reverse (0.3H) Type

煜倫股份有限公司

FILE NO.

DRAWING BY

.X ± 0.2
.XX ± 0.1
.XXX ±
AWG

AREA

REVISIONS

HK

DATE

UNIT / mm

SCALE 1:1

PROJECTION