

Specifications

Electrical

Voltage Rating: 50V(AC)

Current Rating: 1.0A

Contact Resistance: 20mΩ max.

Dielectric Withstanding Voltage: 500V AC/1min.

Insulation Resistance: 100M Ω min.

Material and Finish

Circuits: 2~16P&20p

Insulator: High Temperature Plastic UL94V-0

Color: Natural

Contact: Phosphor Bronze, Tin-Plated

Plating: Tin /lead-plated

Temperature Range: -40°C~+105°C

Poles	Dimension mm (in.)		Part No.	Note.
	A	B		
2	1.0(0.039)	4.0(0.157)	SH-WR-02	
3	2.0(0.079)	5.0(0.197)	SH-WR-02	
4	3.0(0.118)	6.0(0.236)	SH-WR-02	
5	4.0(0.157)	7.0(0.276)	SH-WR-02	
6	5.0(0.197)	8.0(0.315)	SH-WR-02	
7	6.0(0.236)	9.0(0.354)	SH-WR-02	
8	7.0(0.276)	10.0(0.394)	SH-WR-02	
9	8.0(0.315)	11.0(0.433)	SH-WR-02	
10	9.0(0.354)	12.0(0.472)	SH-WR-02	
11	10.0(0.394)	13.0(0.512)	SH-WR-02	
12	11.0(0.433)	14.0(0.551)	SH-WR-02	
13	12.0(0.472)	15.0(0.591)	SH-WR-02	
14	13.0(0.512)	16.0(0.630)	SH-WR-02	
15	14.0(0.551)	17.0(0.669)	SH-WR-02	
16	15.0(0.590)	18.0(0.708)	SH-WR-02	
20	19.0(0.748)	22.0(0.866)	SH-WR-02	

RoHS Compliant

TOLERANCES ARE

MORETHANALL
PCB CONNECTORS
Cable ASSEMBLIES

DRAWING BY CY

CHECKED BY GENIUS

UNIT/ mm

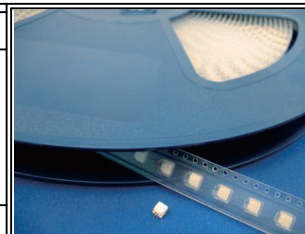
SCALE 1:1

DATE

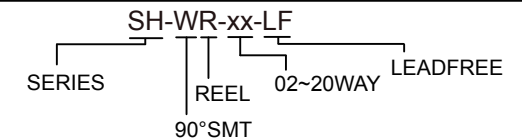
SIZE A4

PJECTION

X. ±
.X ±
.XX ±
.XXX ±
ANG ±



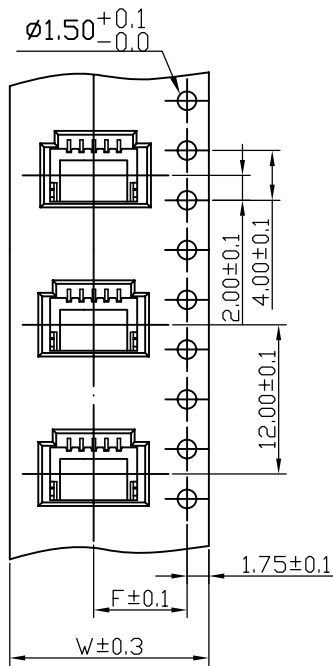
ORDER INFORMATION



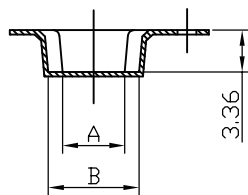
煜倫股份有限公司

www.morethanall.com

DESCRIPTION: 1.0mm Wire to Board Wafer SMT Side Entry

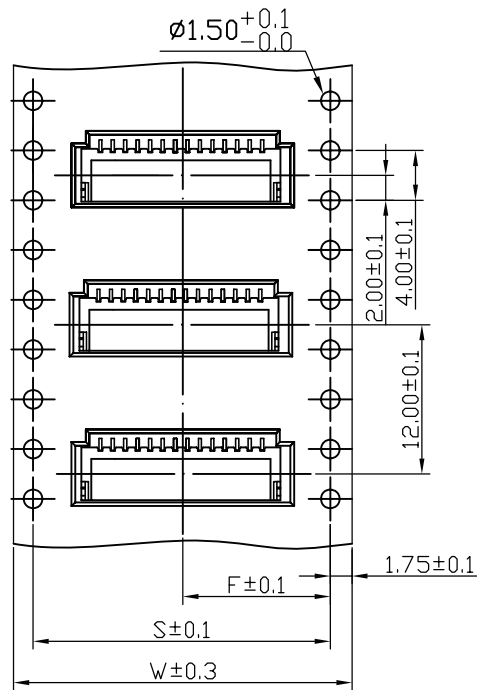


2~13 Contacts

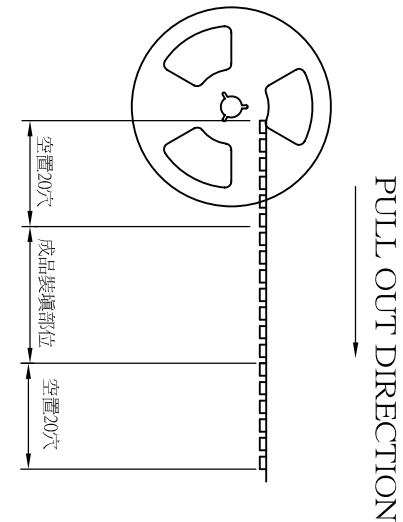
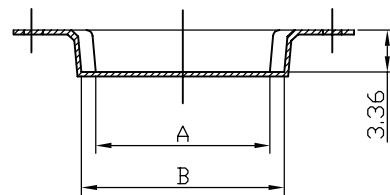


$A = 1.0 \times \text{Poles}$

$B = (1.0 \times \text{Poles}) + 2.3 \text{ mm}$



14~16(20) Contacts



Poles	W	F	S	Q'TY/Reel
02	16.0	7.5		1000PCS
03	16.0	7.5		1000PCS
04	16.0	7.5		1000PCS
05	16.0	7.5		1000PCS
06	24.0	11.5		1000PCS
07	24.0	11.5		1000PCS
08	24.0	11.5		1000PCS
09	24.0	11.5		1000PCS
10	24.0	11.5		1000PCS
11	24.0	11.5		1000PCS
12	24.0	11.5		1000PCS
13	24.0	11.5		1000PCS
14	32.0	14.2	28.4	1000PCS
15	32.0	14.2	28.4	1000PCS
16	32.0	14.2	28.4	1000PCS
20	44.0	20.2	40.4	1000PCS

RoHS Compliant

TOLERANCES ARE

MORETHANALL
PCB CONNECTORS
Cable ASSEMBLIES

DRAWING BY CY

CHECKED BY GENIUS

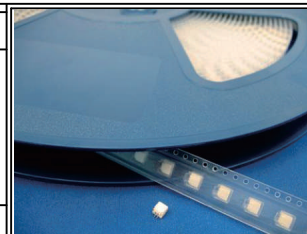
UNIT/ mm SCALE 1:1

DATE

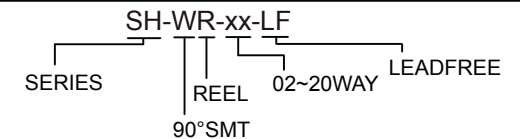
SIZE A4

X. ±
.X ±
.XX ±
.XXX ±
ANG ±

PJECTION



ORDER INFORMATION



DESCRIPTION: 1.0mm Wire to Board Wafer SMT Side Entry

煜倫股份有限公司

www.morethanall.com