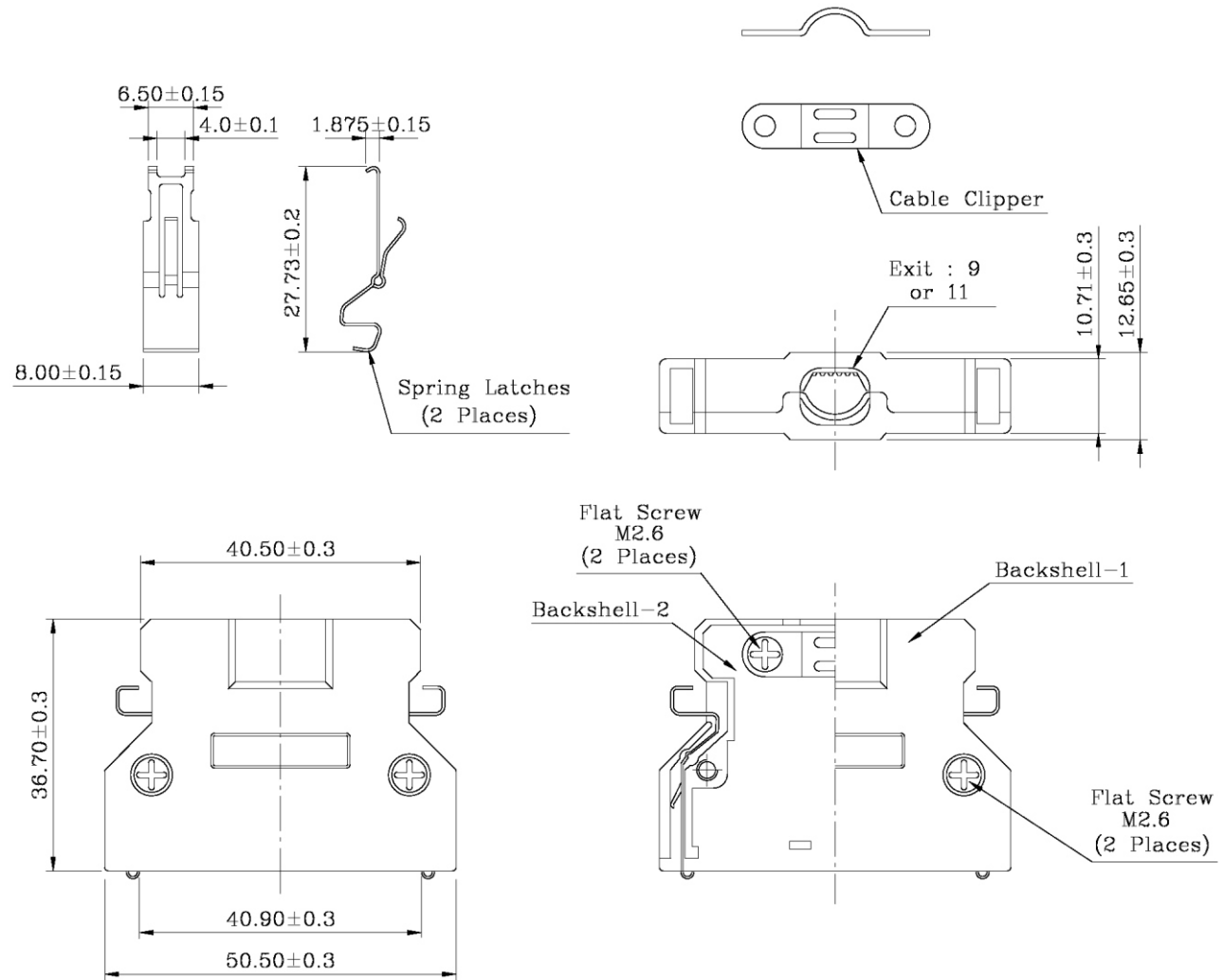


FEATURES:

- Round cable straight exit
- Strain relief staple with spring latches
- Backshell desing by Die-Cast
- Excellent EMI/RFI protection

MATERIALS:

- Backshell: Zinc plated nickel over copper
- Spring latches: Phosphor Bronze over Nickel
- Screw: steel nickel plated over copper
- Cable Clipper: steel nickel plated



HPD-PFW-050-LF
LEADFREE

RoHS Compliant



PART NO. **HPD-PFW-050**

DWG NO. **HPD-PFW-050**

FILE NO.

UNIT / mm

SCALE 1:1

CHECKED BY CY

DRAWING BY

PROJECTION

TOLERANCES ARE

.X ± 0.2
.XX ±
.XXX ±
AWG

DESCRIP TION:

AREA

REVISIONS

HK

DATE

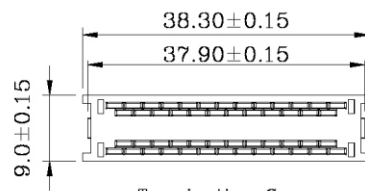
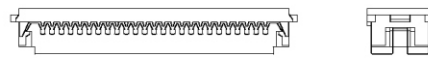
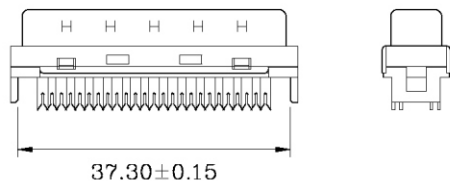
煜倫股份有限公司

• **MATERIALS:(RoHS Compliant)**

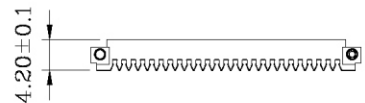
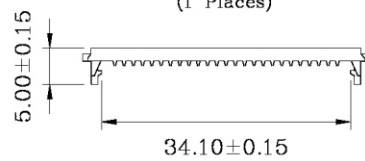
Housing And Cover : Plastic thermoplastic
 P.B.T UL94V-0 black
 Contacts : Phosphor bronze gold selective plated
 Front Shell : Steel nickel plated over copper

• **ELECTRICAL CHARACTERISTICS**

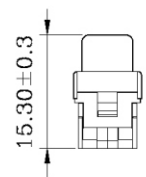
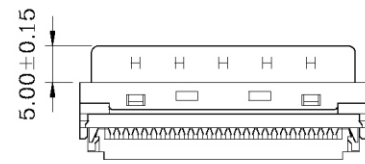
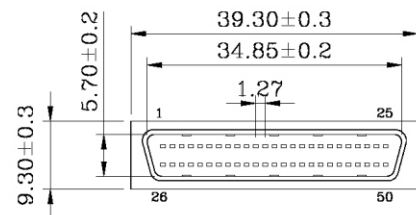
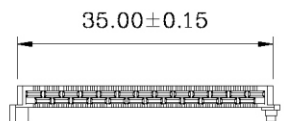
Contact Current Rating: 1 Amp
 Dielectric Withstanding Voltage: 500V AC
 Insulation Resistance: 500MΩ/Min
 Contact Resistance: 35mΩ/Max
 Operation Temperature : -55°C ~ +105°C



Termination Cover
(1 Places)



Wire Holder
(2 Places)



HPD-PFW-050-LF

LEADFREE

RoHS Compliant



PART NO. **HPD-PFW-050**

DWG NO. **HPD-PFW-050**

CHECKED BY CY

TOLERANCES ARE

DESCRIP TION:

.X ± 0.2
 .XX ±
 .XXX ±
 AWG

FILE NO.

DRAWING BY

AREA

REVISIONS

HK

DATE

煜倫股份有限公司

UNIT / mm

SCALE 1:1

PROJECTION

