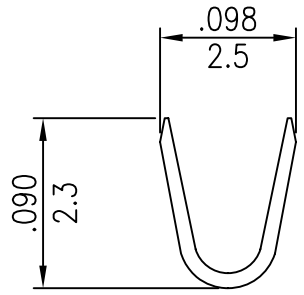
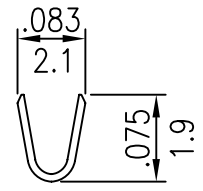
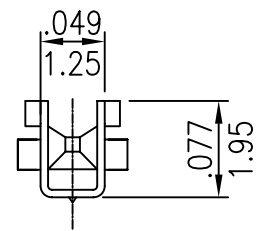
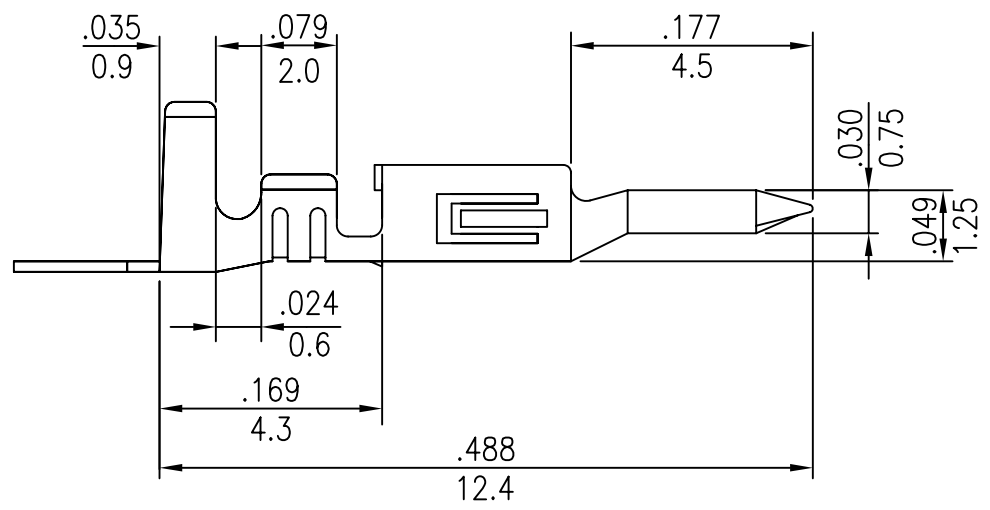
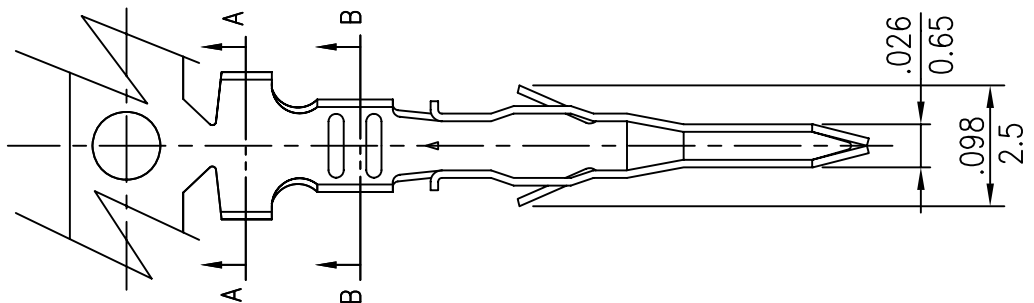


- \* Material: Phosphor bronze
- \* Finished: Tin-plated 60u"
- \* Wire range: AWG#20~#26
- \* Thickness: 0.20mm
- \* Q'TY: 5,000pcs/reel



B-B SECTION

A-A SECTION



PART NO. MIF-MT-20

DWG NO. MIF-MT-20

FILE NO.

APPROVED BY CY

DRAWING BY

TOLERANCES ARE  
 .X  
 .XX  
 .XXX  
 AWG

DESCRIPTION: 3.0mm MICKO FIT MALE TERMINAL

煜倫股份有限公司

UNIT / mm

SCALE 1:1

PROJECTION

AREA

REVISIONS

HK

DATE