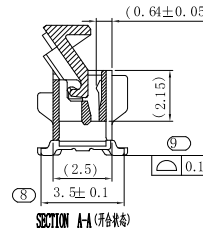
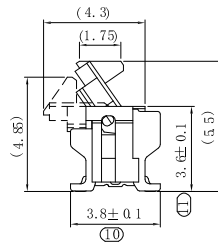
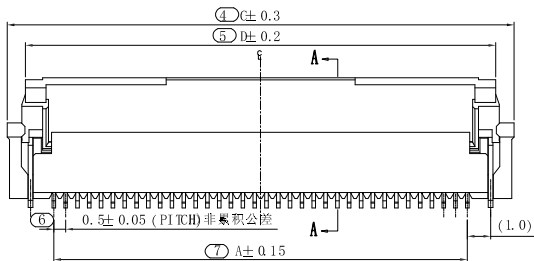
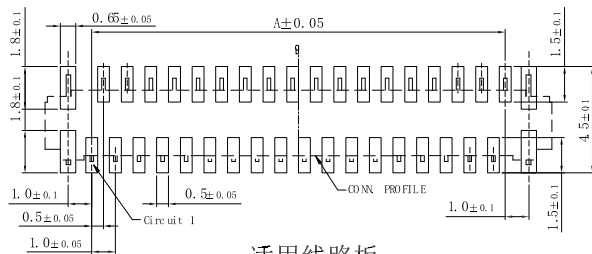


适用FPC寸法
APPLICABLE FPC



SECTION A-A (非对称)



适用线路板
RECOMMENDED PCB LAYOUT

SPEC :

- Housing : Hight-Temp Plastic,UL94V-0
Color : Nature(Lvory)(LCP)
- Locker : Hight-Temp Plastic,UL94V-0
Color : Black(LCP)
- Contact : Phosphor Bronze(C5191)
- Solder Tab : Brass(C2680)

	CKT	Dim A	Dim B	Dim C	Dim D	Dim F
	10	4.5	5.56	8.50	6.9	4
4	焊片 Fitting Nail	磷青铜 Phosphor Bronze	2	电镀(锡): 整个表面镀底镍 30U"MIN,再镀锡80U"MIN.		
3	锁扣 Actuator	PPS UL94V-0)	1	棕色		
2	端子 Contact	磷青铜 Phosphor Bronze	nx1	电镀(锡): 整个表面镀底镍 30U"MIN,再功能区点镀金1U"MIN.		
1	基座 Housing	PA9T (UL94V-0)	1	本色		
序号	名称	材料	数量	备注		

RoHS Compliant

TOLERANCES ARE

MORETHANALL
PCB CONNECTORS
Cable ASSEMBLIES

DRAWING BY CY

CHECKED BY GENIUS

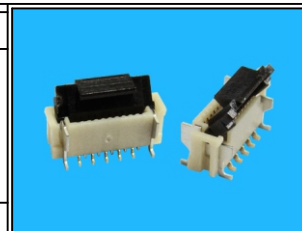
UNIT / mm SCALE 1 : 1

DATE

SIZE A4

X, ±
.X ± 0.30
.XX ± 0.20
.XXX ± 0.10
ANG ±

P PROJECTION



ORDER INFORMATION

FPV-VHAL48-10-LF
SERIES | | | | | LEADFREE
10 WAY
HIGH 4.85mm
L TYPE FOOT POSITION
180°SMT SINGLE CONTACT
HINGED ZIF

DESCRIPTION: 0.5PH 4.6H 掀盖立贴单接正脚位鍍金

煜倫股份有限公司

www.morethanall.com