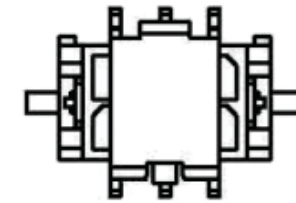
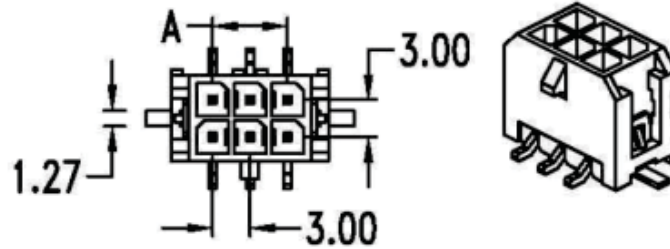


Features:

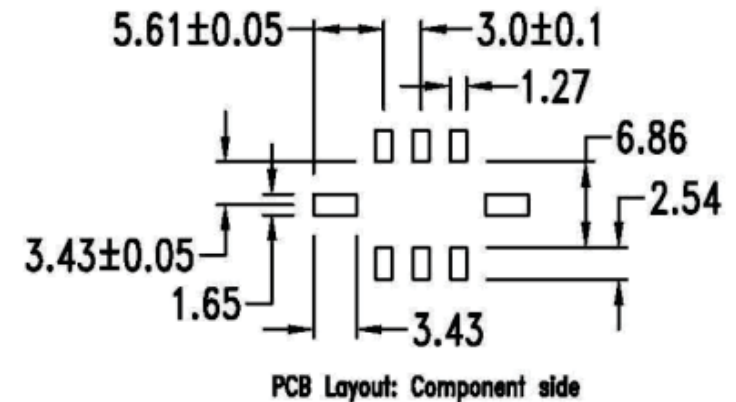
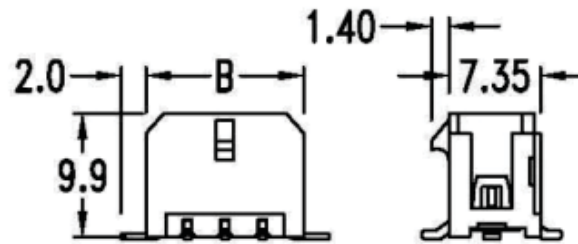
- 2 ~ 24 circuits available
- Material: LCP
- Tin-plated brass pin

Specification:

- Current rating: 5A AC, DC
- Voltage rating: 250V AC, DC
- Contact resistance: 10mΩ Max.
- Dielectric withstanding voltage: 1500V AC/minute
- Ambient temperature range: -25°C ~ 85°C



Shown with disposable cap



PCB Layout: Component side

Dimensional Information

Circuits	Dim. A	Dim. B	Circuits	Dim. A	Dim. B	Circuits	Dim. A	Dim. B
2		6.65	6	6.0	12.65	10	12.0	18.65
4	3.0	9.65	8	9.0	15.65	12	15.0	21.65

Circuits	Dim. A	Dim. B	Circuits	Dim. A	Dim. B	Circuits	Dim. A	Dim. B
14	18.0	24.65	18	24.0	30.65	22	30.0	36.65
16	21.0	27.65	20	27.0	33.65	24	33.0	39.65

RoHS Compliant

TOLERANCES ARE

MORETHANALL
PCB CONNECTORS
Cable ASSEMBLIES

煜倫股份有限公司

www.morethanall.com

DRAWING BY CY

CHECKED BY GENIUS

UNIT/mm SCALE 1:1

DATE

SIZE A4

X. ±
.X ±
.XX ±
.XXX ±
ANG ±

PROJECTION



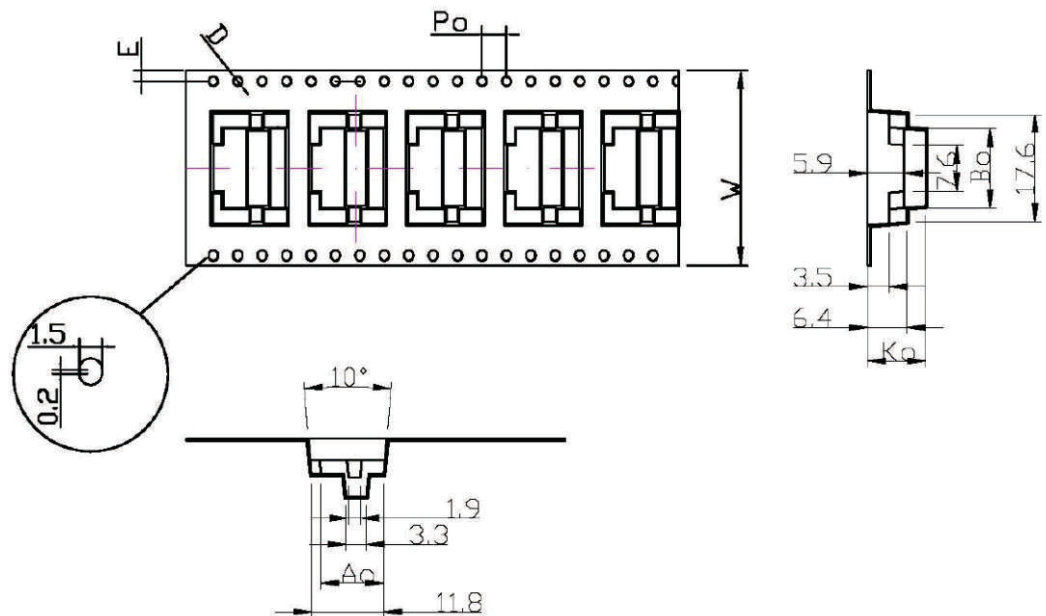
ORDER INFORMATION

MIF-PVECR-2Xxx-LF
SERIES LEADFREE
2X01:02WAY
2X12:24WAY
MALE REEL
180°SMT CAP
EAR

DESCRIPTION:

SALES LEADS AND PRODUCT REQUEST FORM

SPEC NO: _____



NOTE:

- 1.10 Sprocket hole pitch cumulative tolerance ± 0.2 m/m.
2. Carrier camber is within 1mm in 250mm
3. Material: Black Conductive polystyrene Alloy.
4. Ao and Bo measured on a plane 0.3mm above the bottom of the pocket.
5. Ko measured from a plane on the inside bottom of the pocket to the top surface of the carrier.
6. Pocket position relative to sprocket hole measured as true position of pocket, not pocket hole.

ITEM	SPEC
W	32 $+0.30$ -0.30
Ao	10.3 $+0.10$ -0.10
Bo	13.0 $+0.10$ -0.10
Ko	9.5 $+0.10$ -0.10
P	16.0 $+0.10$ -0.10
F	14.2 $+0.10$ -0.10
E	1.75 $+0.10$ -0.10
D	1.50 $+0.10$ -0.00
D1	1.50 $+0.25$ -0.00
Po	4.00 $+0.10$ -0.10
P2	2.00 $+0.10$ -0.10
t	0.40 $+0.05$ -0.05

RoHS Compliant

TOLERANCES ARE

MORETHANALL
PCB CONNECTORS
Cable ASSEMBLIES

煜倫股份有限公司

www.morethanall.com

DRAWING BY CY

CHECKED BY GENIUS

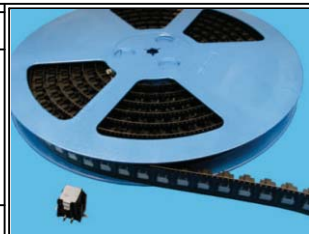
UNIT/mm SCALE 1:1

DATE

SIZE A4

X. \pm
.X \pm
.XX \pm
.XXX \pm
ANG \pm

PJECTION



ORDER INFORMATION

MIF-PVECR-2Xxx-LF
SERIES LEADFREE
2X01:02WAY
2X12:24WAY
MALE REEL
180°SMT CAP
EAR

DESCRIPTION:

