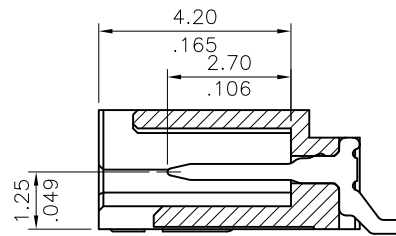
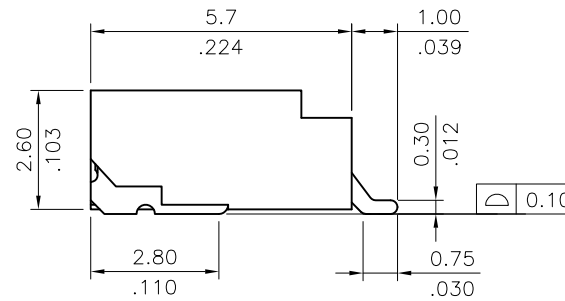
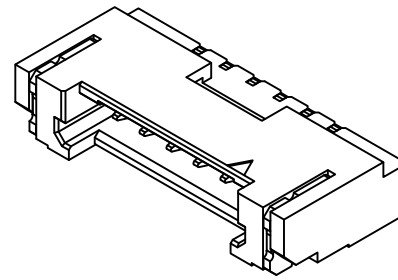


Recommended P.C. Board Layout



SEC. A-A

NOTE:

Material :

- \* Base : High Temperature plastic UL 94V-0
  - \* Contact : Copper alloy
  - \* Fixed tab : Matte Tin plated over Nickel
- For Lead Free IR Reflow Process

DIM. A = 1.25 x NO. OF SPACES

DIM. B = DIM. A + 6.20

DIM. C = DIM. A + 1.75

\* AVAILABLE IN 2 THROUGH 20

RoHS Compliant

TOLERANCES ARE



煜倫股份有限公司

www.morethanall.com

DRAWING BY CY

CHECKED BY GENIUS

UNIT / mm

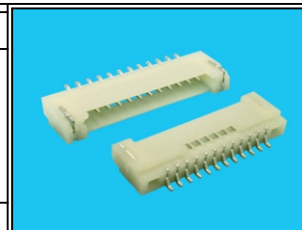
SCALE 1 : 1

DATE

SIZE A4

PJECTION

X, ±  
.X ± 0.30  
.XX ± 0.20  
.XXX ± 0.10  
ANG ±



ORDER INFORMATION

DF14L-WX-xx-LF

SERIES | LEADFREE  
02~20WAY  
NON POST  
90°SMT

DESCRIPTION: