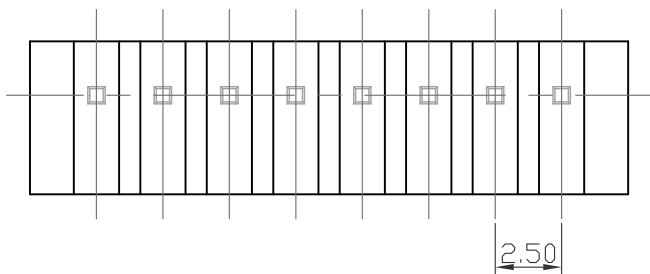
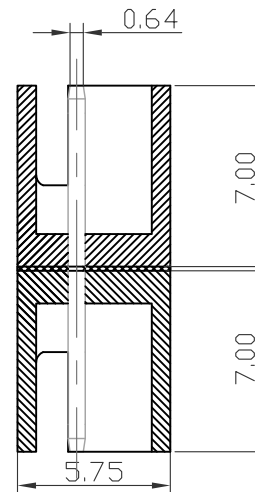
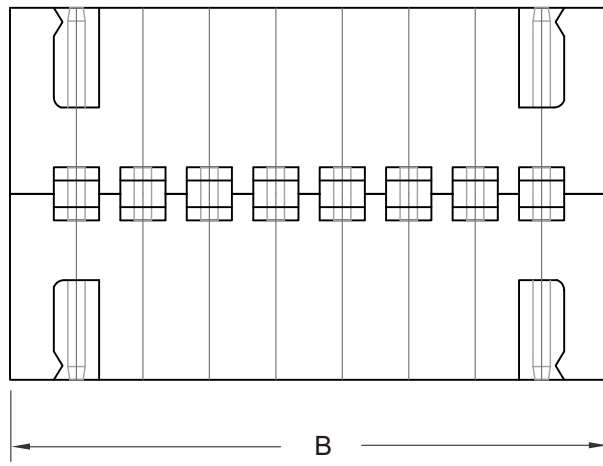


RECOMMENDED P.C. BOARD HOLE DIMM.



Specifications

Current Rating: 3A AC, DC
 Voltage Rating: 250V AC Maximum
 Operating Temp: -25°C ~ +85°C
 Contact Resistance: 10mΩ Max
 Insulation Resistance: 1000MΩ Min
 Withstanding voltage: 1000V AC/minute
 Terminal Material: Brass/Tin-plated
 Material: Nylon 66, UL94V-0

Poles	Dimension mm (in.)		Part No.	Note.
	A	B		
2	2.50 (0.098)	7.50 (0.295)		
3	5.00 (0.197)	10.00 (0.394)		
4	7.50 (0.295)	12.50 (0.492)		
5	10.00 (0.394)	15.00 (0.591)		
6	12.50 (0.492)	17.50 (0.689)		
7	15.00 (0.591)	20.00 (0.787)		
8	17.50 (0.689)	22.50 (0.886)		
9	20.00 (0.787)	25.00 (0.984)		
10	22.50 (0.886)	27.50 (1.802)		
11	25.00 (0.984)	30.00 (1.181)		
12	27.50 (1.802)	32.50 (1.280)		

RoHS Compliant

TOLERANCES ARE

MORETHANALL
 PCB CONNECTORS
 Cable ASSEMBLIES

DRAWING BY CY

CHECKED BY GENIUS

UNIT / mm

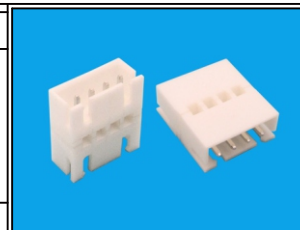
SCALE 1 : 1

DATE

SIZE A4

PJECTION

X, ±
 .X ± 0.35
 .XX ± 0.25
 .XXX ±
 ANG ±



ORDER INFORMATION

XHX2-MS-xxxx-LF

SERIES

LEADFREE

0202:02 TO 02 WAY

1212:12 TO 12 WAY

SLIM

MALE TO MALE

煜倫股份有限公司

www.morethanall.com

DESCRIPTION: 2.5mm Wire-to-Board Header DIP 180° Type Double