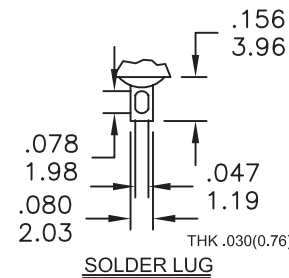
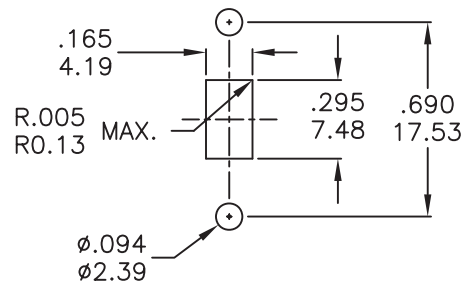


Model No.	POS.1	POS.2	POS.3
Term. Comm.	ON	OFF	ON
SCHEMATIC		OPEN	

SWITCH FUNCTION



**SPECIFICATIONS**

**MECHANICAL LIFE:** 30,000 make-and-break cycles.  
**CONTACT RESISTANCE:** 10mΩ max. initial @ 2-4VDC  
 100mA for both silver and gold plated contacts.  
**INSULATION RESISTANCE:** 1,000MΩ min.  
**DIELECTRIC STRENGTH:** 1,000 V RMS@sea level.  
**OPERATING TEMPERATURE:** -30°C to 85°C.

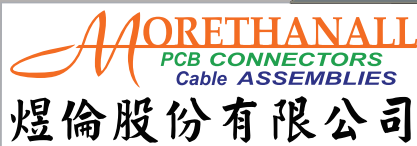
**MATERIALS**

**CASE:** Dially phthalate (DAP) (UL94v-0).  
**ACTUATOR:** Nylon, black std.  
**HOUSING:** Stainless Steel.  
**CONTACT:** Silver or gold plated.  
**TERMINAL SEAL:** Epoxy.

**RATING :**

R : 0.4 Volt-Amps(VA) max. @20V max.(AC or DC)  
 Q : 2Amps @250VAC  
 5Amps @120 VAC or 28 VDC

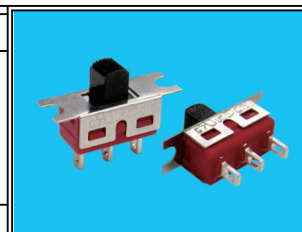
**RoHS Compliant**



www.morethanall.com

DRAWING BY CY  
 CHECKED BY GENIUS  
 UNIT / mm SCALE 1 : 1  
 DATE  
 SIZE A4 PPROJECTION

TOLERANCES ARE  
 X. ±  
 .X ± 0.40  
 .XX ± 0.25  
 .XXX ±  
 ANG ± 5°



**ORDER INFORMATION**

**SLSW47-SE050-1X03-LF**  
 SERIES | LEADFREE  
 | 03 WAY  
 | KNOB LENGTH 5.08mm  
 EAR  
 SOLDER

DESCRIPTION: Slide Switches