

MATERIAL

Insulator : Nylon 6T

Contact Pin : Brass

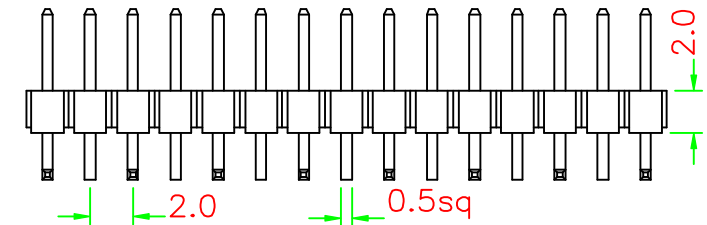
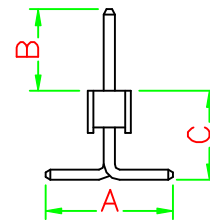
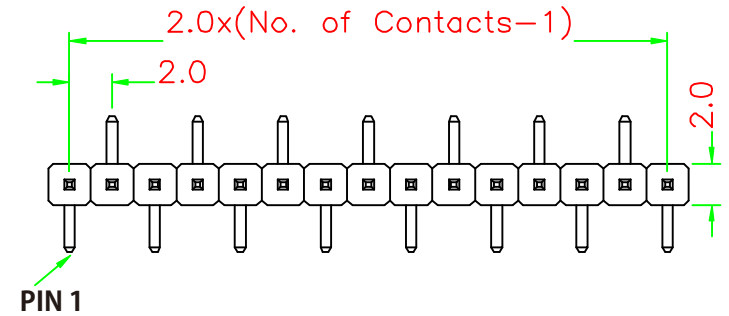
SPECIFICATION

Current Rate : 1 AMP

Insulation Resistance : 5000MΩ Min. at DC 500V

Contact Resistance : 20mΩ Max. at DC 100mA

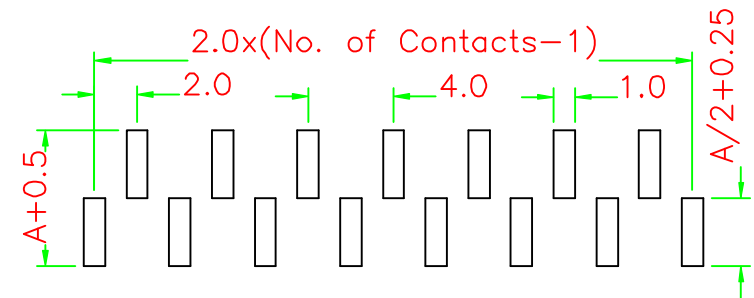
Operation Temperature : -55°C to +105°C



PART NO.

M-V22X-1XxxL : A=4.2 B=4.0 C=2.2

M-V27X-1XxxL : A=4.2 B=4.0 C=2.7



Recommended P.C.B. Layout

RoHS Compliant

TOLERANCES ARE

MORETHANALL
PCB CONNECTORS
Cable ASSEMBLIES

煜倫股份有限公司

www.morethanall.com

DRAWING BY CY

CHECKED BY GENIUS

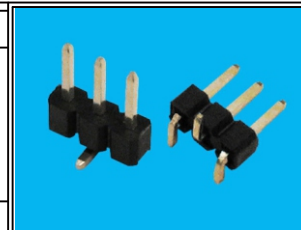
UNIT / mm SCALE 1 : 1

DATE

SIZE A4

PPOJECTION

X, ±
.X ±
.XX ±
.XXX ±
ANG ±



ORDER INFORMATION

M-VxxX-1XxxL-LF

SERIES | 180°SMT | NON POST | 22:HIGH 2.2mm | 27:HIGH 2.7mm

1X02:02WAY | 1X40:40WAY | LEADFREE LEFT FOOT

DESCRIPTION: 2.0MM PIN HEADER SMT TYPE