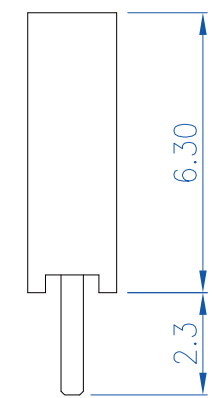
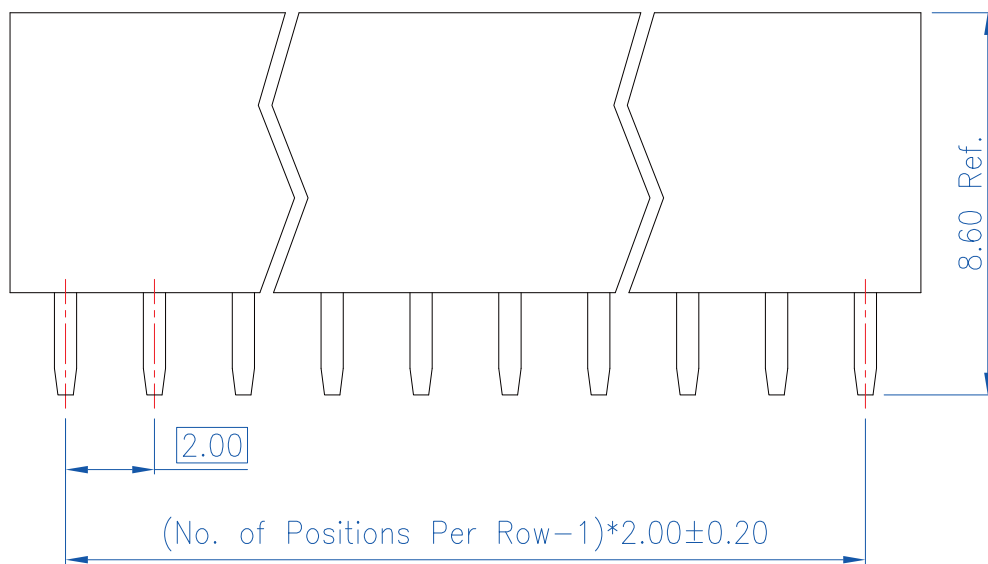


PCB Layout  
(Top View)



**Material and Finish**

1. Housing: Nylon 6T (UL94V-0), Black.
2. Terminal: Copper Alloy (t=0.50mm), Gold Plating.

**Electrical Characteristics**

1. Current Rating: 1.0 Amp. Max..
2. Dielectric Withstand Voltage: 800V AC RMS for 60Seconds.
3. Insulation Resistance: 1000M Ohms Min. at 500V DC.
4. Contact Resistance: 30m Ohms Max.

**Mechanical Characteristics**

1. Operating Temperature: -55°C ~ +105°C

RoHS Compliant

TOLERANCES ARE



煜倫股份有限公司

www.morethanall.com

DRAWING BY CY

CHECKED BY GENIUS

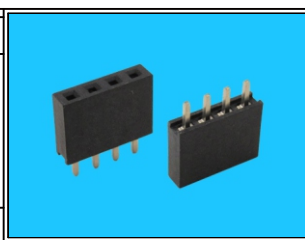
UNIT / mm SCALE 1 : 1

DATE

SIZE A4

X. ±  
.X ±  
.XX ±  
.XXX ±  
ANG ±

PJECTION



ORDER INFORMATION

S-D63-1Xxx-LF  
SERIES | LEADFREE  
1X02:02WAY  
1X40:40WAY  
HIGH 6.3mm  
DIP 180°

DESCRIPTION: 2.00mm Post Header Receptacle PCB Mount Vertical Type Single Row (H=6.30mm)