

P.C.B. LAYOUT
Bottom view

DIM	TOL			
	2P-5P	6P-12P	13P-16P	17P-24P
Dim L	$N \times 5.08 + 0.5$	± 0.20	± 0.30	± 0.40
Dim P	$(N-1) \times 5.08$	± 0.20	± 0.30	± 0.50

Material

- Item 1 Terminal body Thermoplastic (UL94V-0)
- Item 2 Terminal cover Thermoplastic (UL94V-0)
- Item 3 Terminal lever Thermoplastic (UL94V-0) Orange (RAL 2011/P)
- Item 4 Solder pin Brass, Tin plated
- Item 5 Spring clamp Stainless steel

Electrical cULus

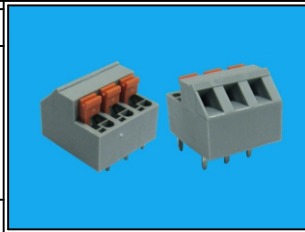
- Voltage rating: 250VAC
- Current rating: 12A
- Wire range:
- Solid wire(AWG): 16-22
- Stranded wire(AWG): 16-22
- Withstanding Voltage: 1.5KV
- Operating temperature: -40°C to +115°C
- Soldering temperature: 260°C±5°C/5 Sec
- Safety Approval:
- Critical dimension: ∇

RoHS Compliant

TOLERANCES ARE



DRAWING BY CY X. ± 0.50
 CHECKED BY GENIUS .X ± 0.30
 UNIT / mm SCALE 1 : 1 .XX ± 0.10
 DATE .XXX ±
 SIZE A4 PPROJECTION ANG ± 1°



ORDER INFORMATION

TBX051-A12-xx-LF
 SERIES | LEADFREE
 | 02~24WAY
 | HIGH 12.5mm
 | SLANT DIP

煜倫股份有限公司

www.morethanall.com

DESCRIPTION: