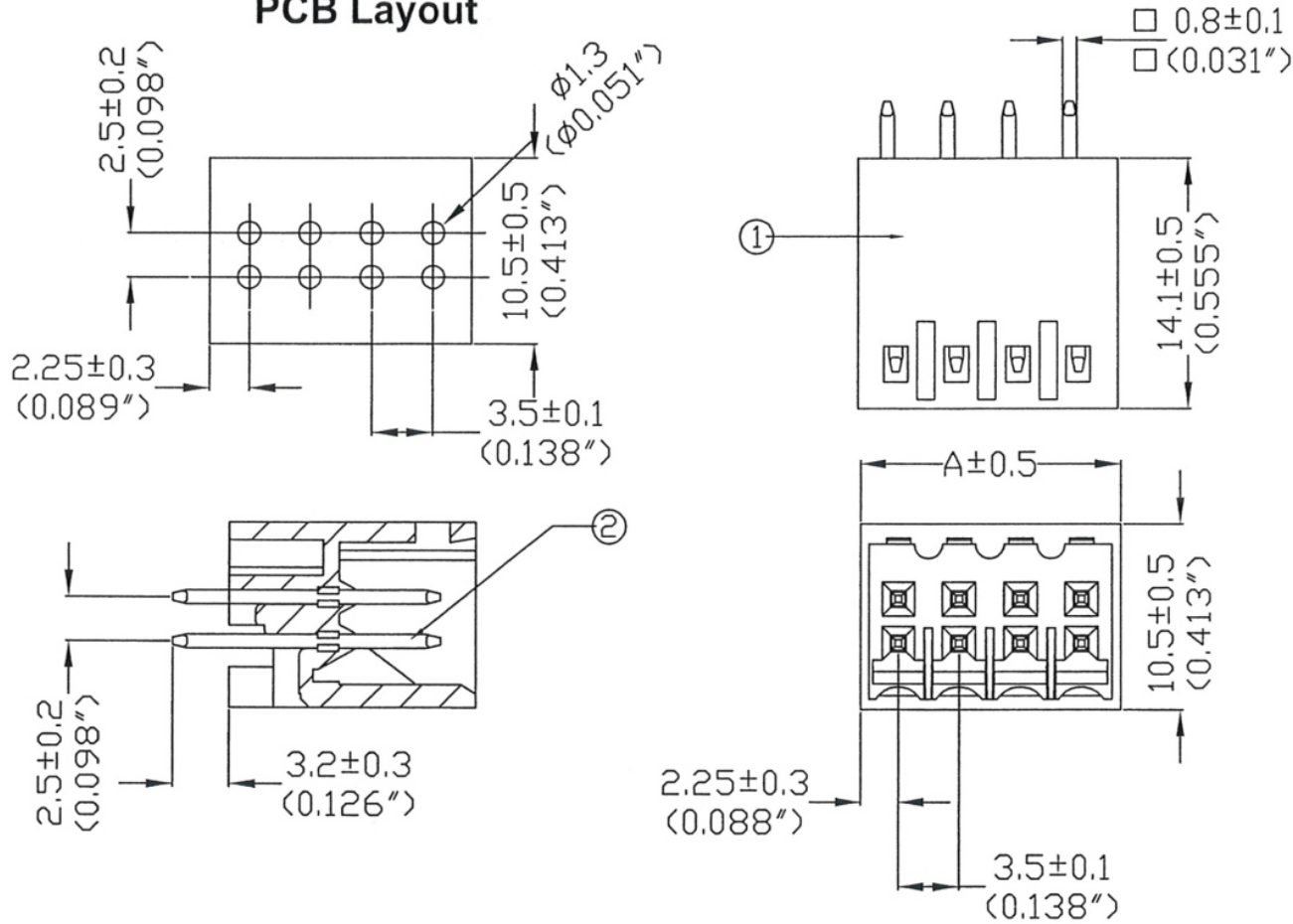


PCB Layout



Current rating : 5Amp AC150V
 Insulation withstands volt : AC2000V min
 Insulation resistance : >2000MΩ DC500V
 Operation temperature : -40°C to +105°C

Pitch: 3.5mm (0.138in)

Poles	A(mm)	A(in)	Poles	A(mm)	A(in)
4	8.0	0.315	24	43.0	1.693
6	11.5	0.453	26	46.5	1.831
8	15.0	0.591	28	50.0	1.969
10	18.5	0.728	30	53.5	2.106
12	22.0	0.866	32	57.0	2.244
14	25.5	1.004	34	60.5	2.382
16	29.0	1.142	36	64.0	2.520
18	32.5	1.280	38	67.5	2.657
20	36.0	1.417	40	71.0	2.795
22	39.5	1.555			

RoHS Compliant

TOLERANCES ARE

MORETHANALL
 PCB CONNECTORS
 Cable ASSEMBLIES

DRAWING BY CY

CHECKED BY GENIUS

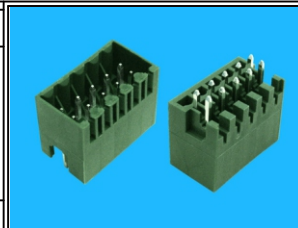
UNIT / mm SCALE 1 : 1

DATE

SIZE A4

X, ±
 .X ±
 .XX ±
 .XXX ±
 ANG ±

P PROJECTION



ORDER INFORMATION

TBX035-PDB-2Xxx-LF

SERIES | LEADFREE
 | 2X02:04WAY
 | 2X20:40WAY
 MALE | BOX
 | DIP 180°

煜倫股份有限公司

www.morethanall.com

DESCRIPTION: