

Specifications

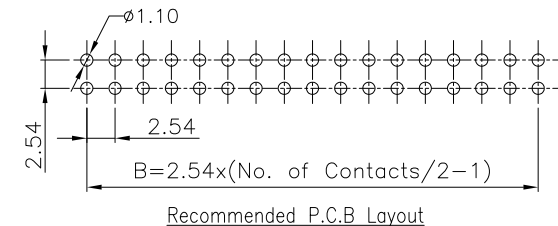
Current Rating:3.0A AC/DC  
 Voltage Rating:250V AC/DC  
 Contact Resistance:20m Ohm. Max  
 Insulation Resistance:1000M Ohm. Min  
 Withstanding Voltage:600V AC For One Minute  
 Operating Temperature Range : -40°C To +105°C

Material:

Plastic:PBT (UL94V-0)  
 Standard Color:Black  
 Terminal:Copper Alloy  
 Plating:Gold Plated

Notes:  
 No.of Positions 50~60 With Three Key ; All Other Positions With one key.

No. of Positions	Dim A	Dim B	No. of Positions	Dim A	Dim B	Note
10	32.00	10.16	34	62.48	40.64	
14	37.08	15.24	40	70.10	48.26	
16	39.62	17.78	44	75.18	53.34	
20	44.70	22.86	50	82.80	60.96	1K&3K
24	49.78	27.94	60	95.50	73.66	1K&3K
26	52.32	30.48				
30	57.40	35.56				



RoHS Compliant

TOLERANCES ARE

**MORETHANALL**  
 PCB CONNECTORS  
 Cable ASSEMBLIES

DRAWING BY CY

CHECKED BY GENIUS

UNIT / mm

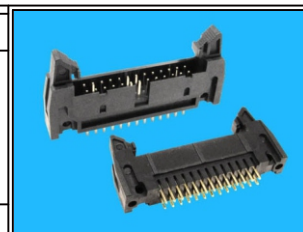
SCALE 1 : 1

DATE

SIZE A4

PPOJECTION

X, ±  
 X ± 0.20  
 .XX ± 0.15  
 .XXX ±  
 ANG ±



ORDER INFORMATION

L-DS-xx-LF  
 SERIES | LEADFREE  
 | 10~64 WAY  
 | SHORT LATCH  
 | DIP 180°

DESCRIPTION: 2.54mm Shrouded Header Straight Type

煜倫股份有限公司

www.morethanall.com