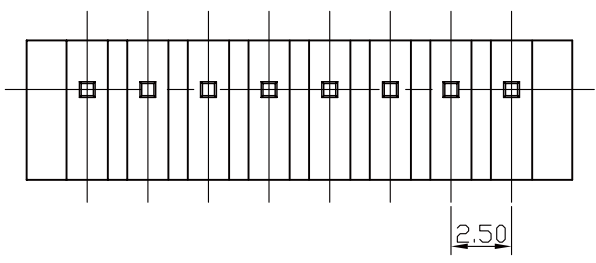
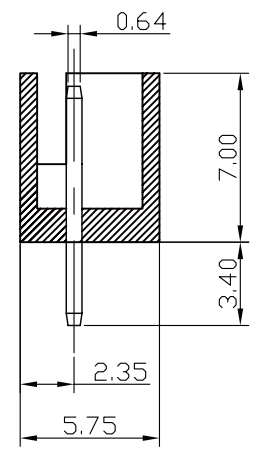
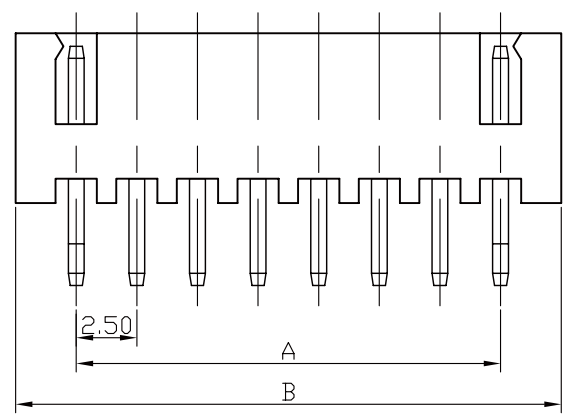


RECOMMENDED P.C.BOARD HOLE DIMM.



Specifications

Current Rating: 3A AC, DC  
 Voltage Rating: 250V AC Maximum  
 Operating Temp: -25°C ~ +85°C  
 Contact Resistance: 10 mΩ Max  
 Insulation Resistance: 1000MΩ Min  
 Terminal Material: Brass/Tin-plated  
 Material: Nylon 66, UL94V-0

Poles	Dimension mm (in.)		Part No.	Note.
	A	B		
2	2.50 (0.098)	7.50 (0.295)		
3	5.00 (0.197)	10.00 (0.394)		
4	7.50 (0.295)	12.50 (0.492)		
5	10.00 (0.394)	15.00 (0.591)		
6	12.50 (0.492)	17.50 (0.689)		
7	15.00 (0.591)	20.00 (0.787)		
8	17.50 (0.689)	22.50 (0.886)		
9	20.00 (0.787)	25.00 (0.984)		
10	22.50 (0.886)	27.50 (1.802)		
11	25.00 (0.984)	30.00 (1.181)		
12	27.50 (1.802)	32.50 (1.280)		
13	30.00 (1.181)	35.00 (1.378)		
14	32.50 (1.280)	37.50 (1.476)		
15	35.00 (1.378)	40.00 (1.575)		
16	37.50 (1.476)	42.50 (1.673)		
17	40.00 (1.575)	45.00 (1.772)		
18	42.50 (1.673)	47.50 (1.870)		
19	45.00 (1.772)	50.00 (1.969)		
20	47.50 (1.870)	52.50 (2.067)		

RoHS Compliant

TOLERANCES ARE



煜倫股份有限公司

www.morethanall.com

DRAWING BY CY

CHECKED BY GENIUS

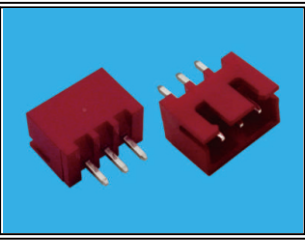
UNIT/mm SCALE 1:1

DATE

SIZE A4

X. ±  
 .X ±  
 .XX ±  
 .XXX ±  
 ANG ±

PJECTION



ORDER INFORMATION

XH-DRD-xx-LF  
 SERIES | LEADFREE  
 02-20WAY  
 RED  
 DIP 180°

DESCRIPTION: 2.5mm Wire-to-Board Header DIP 90° Type