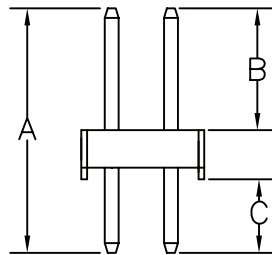
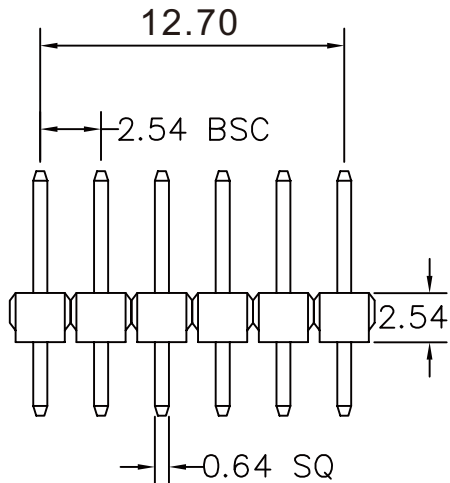


RECOMMENDED P.C.B LAYOUT



A: 11.60 mm B: 6.00 mm C: 3.05 mm

**MATERIAL**

HOUSING : 30% Glass fiber PBT

**MATERIAL**

HOUSING : NYLON-6T,UL94V-0

Contact pin: Copper Alloys .Gold Flash

**SPECIFICATION**

CURRENT: 3A

OPERATING TEMPERATURE: -55°C TO +105°C

CONTACT RESISTANCE : 20 MILLIOHMS MAX

INSULATION RESISTANCE : 1000 MEGAOHMS MIN

WITHSTANDING VOLTAGE: AC 1000V RMS

**RoHS Compliant**

TOLERANCES ARE

**MORETHANALL**  
PCB CONNECTORS  
Cable ASSEMBLIES

DRAWING BY CY

CHECKED BY GENIUS

UNIT/mm

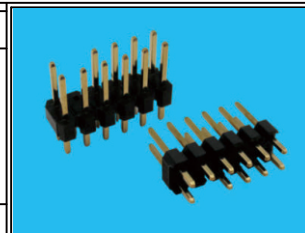
SCALE 1:1

DATE

SIZE A4

X. ±  
.X ± 0.38  
.XX ± 0.25  
.XXX ±  
ANG ±

PJECTION



**ORDER INFORMATION**

H-DN6T-2X06E4-LF  
SERIES | NYLON-6T | 12 WAY | LEADFREE  
DIP 180° | EMPTY #4

DESCRIPTION:

煜倫股份有限公司

www.morethanall.com