

**MATERIAL:**

INSULATOR : PBT, UL 94V-0.

CONTACT : COPPER ALLOY.

CONTACT FINISH : GOLD ON MATING END, TIN ON TERMINATION END,  
WITH ENTIRE CONTACT NICKEL UNDERPLATED

SHELL : STEEL.

BOARDLOCK : BRASS, TIN PLATED.

RIVETED INSERT : BRASS, NICKEL PLATED.

**SPECIFICATION:**

CURRENT RATING : 2 AMP

DIELECTRIC WITHSTANDING VOLTAGE : 1000V AC FOR 1 MINUTE.

INSULATION RESISTANCE : 1000MΩ MIN. AT 500V DC.

CONTACT RESISTANCE : 15mΩ MAX.

OPERATING TEMPERATURE : -55°C ~ +105°C.

**RoHS Compliant**

TOLERANCES ARE

**MORETHANALL**  
PCB CONNECTORS  
Cable ASSEMBLIES

DRAWING BY CY

CHECKED BY GENIUS

UNIT / mm

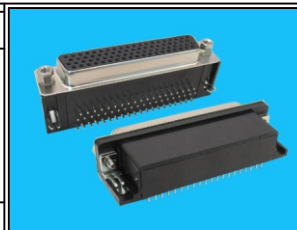
SCALE 1 : 1

DATE

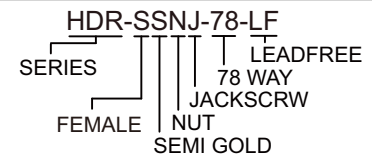
SIZE A4

X, ±  
X ± 0.25  
.XX ± 0.15  
.XXX ± 0.05  
ANG ±

PPOJECTION



**ORDER INFORMATION**



煜倫股份有限公司

www.morethanall.com

DESCRIPTION: