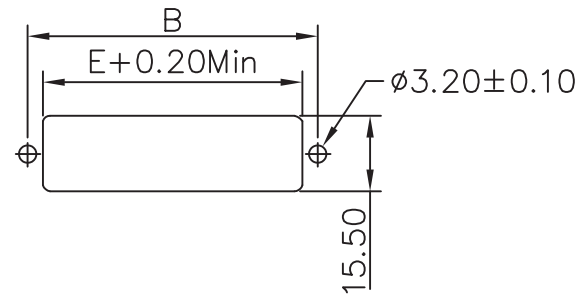
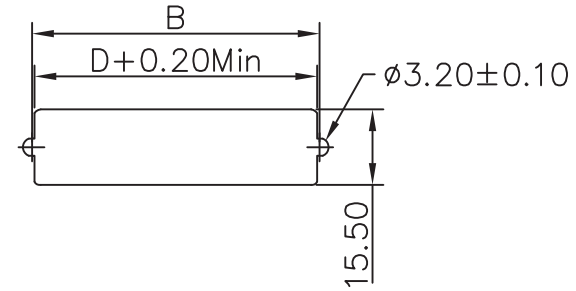


**SPECIFICATIONS:**

Current Rating: 1A AWG#28/1, 2A: AWG26  
 Contact Resistance: 20 Milliohms Max.  
 Insulation Resistance: 1000 Megohms Min.  
 Dielectric Withstanding voltage: 500V AC AT Sea Level  
 Operating Temperature: -55° C TO +105° C (limited BY cABLE)  
 Insulator: Polyester Resin & Glass Reinforced (UL 94V-0)  
 Contact: Phosphor Bronze, Gold Plated Over Nickel



Number of Positions	A	B	C	D	E	F
	$\pm 0.25$	$\pm 0.13$	$\pm 0.125$	$\pm 0.25$	$\pm 0$	$\pm 0.25$
36	67.80	59.74	36.72	58.80	53.30	54.40
50	82.80	74.85	51.84	74.25	68.50	70.50

**RoHS Compliant**

TOLERANCES ARE

**MORETHANALL**  
PCB CONNECTORS  
Cable ASSEMBLIES

煜倫股份有限公司

www.morethanall.com

DRAWING BY CY

CHECKED BY GENIUS

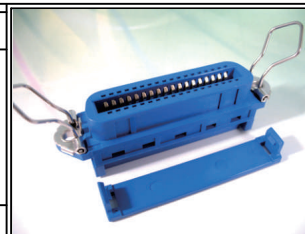
UNIT/mm SCALE 1:1

DATE

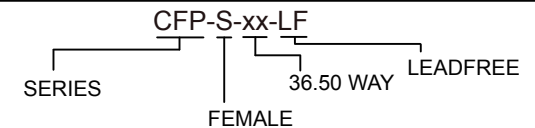
SIZE A4

X,  $\pm$   
 .X  $\pm$   
 .XX  $\pm$   
 .XXX  $\pm$   
 ANG  $\pm$

PJECTION



**ORDER INFORMATION**



DESCRIPTION: