

FEATURES:

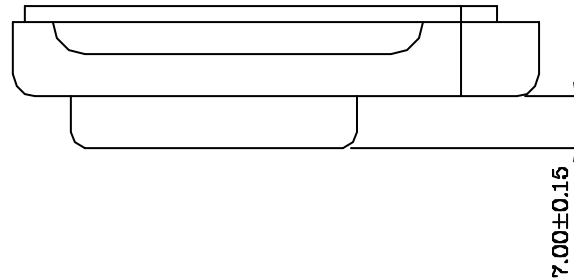
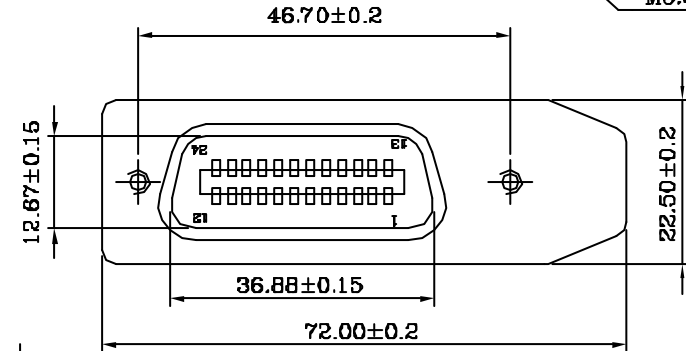
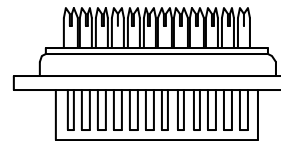
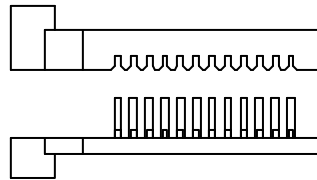
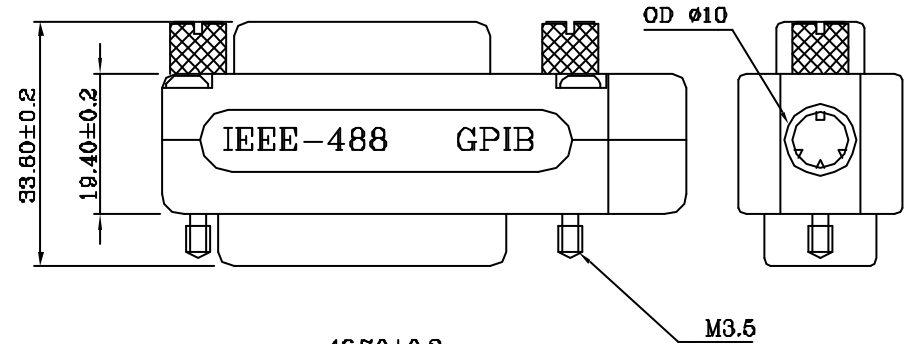
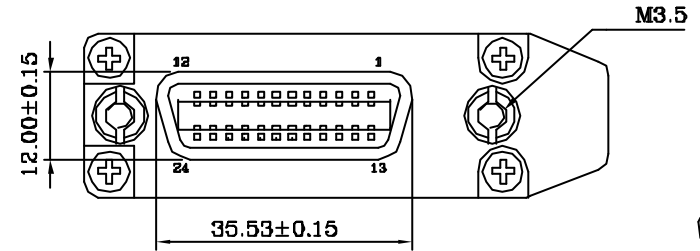
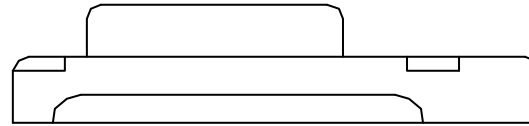
- 24 pos interface bus connector
- Cable(24) conductors 24AWG 26AWG
- Connector kits available too for assembly fabrication
- Consists of two rack and panel type
- Design includes a Two-Piece Die-Cast metal RF shield enclosing the 24 pos back to back connector

MATERIALS:

- Housing And Cover: thermoplastic P.B.T UL94V-0 black
- Contacts: Phosphor bronze gold selective plated
- Shell: Steel nickel plated
- Hood: zinc plated nickel over copper alloy
- Fully EMI/RFI shielded

ELECTRICAL:

- Current Rating: 1 Amp
- Insulation Resistance: 500MΩ/Min
- Withstanding Voltage: 500V AC/Min
- Contact Resistance: 35mΩ Max
- Temperature Range: -55°C ~ +105°C



RoHS Compliant

TOLERANCES ARE

MORETHANALL
PCB CONNECTORS
Cable ASSEMBLIES

DRAWING BY CY

CHECKED BY GENIUS

UNIT / mm

SCALE 1 : 1

DATE

SIZE A4

PJECTION

X, ±
.X ±
.XX ± 0.20
.XXX ± 0.10
ANG ±



ORDER INFORMATION

CTA-M-24-LF
SERIES | LEADFREE
24 WAY
METAL

煜倫股份有限公司

www.morethanall.com

DESCRIPTION: Connectors For Interface Bus Applications PER IEEE STD.488 (GPIB) Die-Cast Metal