

MATERIAL

Insulator: NY6T UL94-V0

Contact Pin : Brass

SPECIFICATION

Current Rate : 3.6 AMP PER PIN (26AWG)

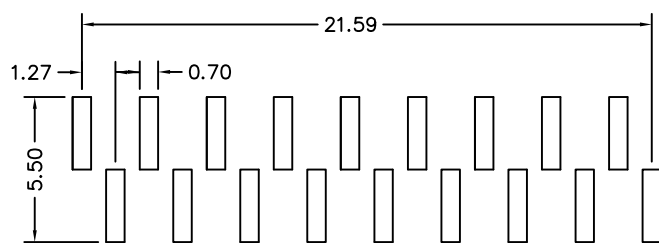
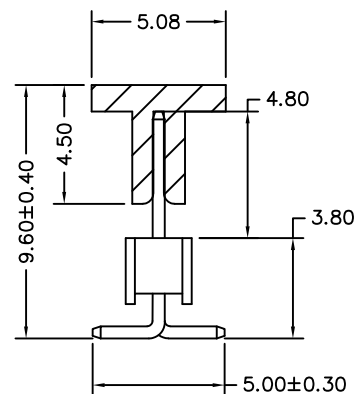
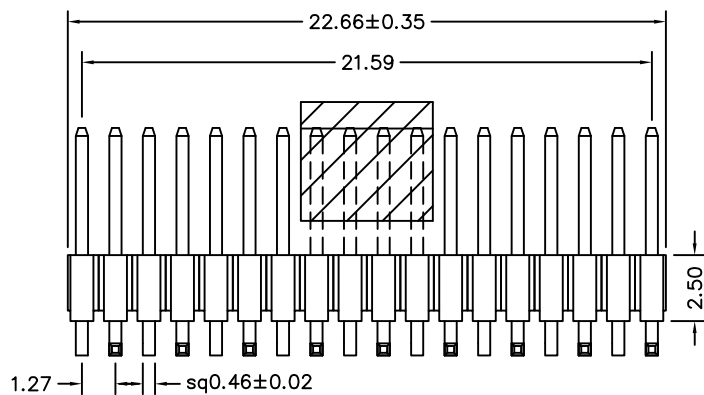
Insulation Resistance : 5000MΩMin. at DC 500V

Contact Resistance : 20mΩMax. at DC 100mA

Dielectric Voltage : AC 500V for one minute

Operating Temperature: -40°C to +105°C

Plated: Gold-Flash



Recommended P.C.B Layout

RoHS Compliant

TOLERANCES ARE

MORETHANALL
PCB CONNECTORS
Cable ASSEMBLIES

煜倫股份有限公司

www.morethanall.com

DRAWING BY CY

CHECKED BY GENIUS

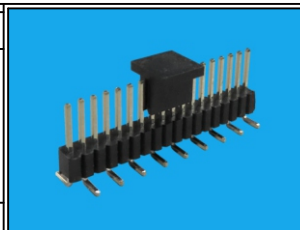
UNIT / mm SCALE 1:1

DATE

SIZE A4

X. ±
.X ± 0.30
.XX ± 0.20
.XXX ±
ANG ± 3°

P PROJECTION



ORDER INFORMATION

P-V38X48C-1X18R-LF
SERIES | CAP | CONTACT 4.8mm | NON POST | 18 WAY | LEADFREE R TYPE FOOT
180°SMT HIGH 3.8mm

DESCRIPTION: PIN HEADER 1.27*2.54mm SMT S/T TYPE, CAP+T/R