

WIRE RANGE A.W.G. mm <sup>2</sup>	ITEM NO.	Stud Size	Dimensions (mm)						
		Metric	a	c	Ød1	Ød2	d3	L	s
16-14 A.W.G. 1.5-2.5 mm <sup>2</sup>	RT-X53-14	5	5.0	4.5	2.3	5.3	10.0	14.0	0.8
	RT-X84-14	8				8.4	14.0	17.0	
	RT-X105-14	10				10.5	18.0	20.0	
12-10 A.W.G. 4-6 mm <sup>2</sup>	RT-X43-10	4	6.0	6.0	3.6	4.3	8.0	14.0	1.0
	RT-X53-10	5				5.3	10.0	15.0	
	RT-X65-10	6				6.5	11.0	16.0	
	RT-X84-10	8				8.4	14.0	19.0	
8 A.W.G. 10 mm <sup>2</sup>	RT-X53-08	5	8.0	8.0	4.5	5.3	10.0	16.0	1.1
	RT-X65-08	6				6.5	11.0	17.0	

RoHS Compliant

TOLERANCES ARE

**MORETHANALL**  
PCB CONNECTORS  
Cable ASSEMBLIES

煜倫股份有限公司

www.morethanall.com

DRAWING BY CY

CHECKED BY GENIUS

UNIT / mm

SCALE 1 : 1

DATE

SIZE A4

X. ±

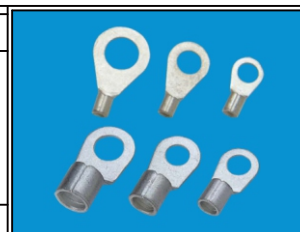
.X ±

.XX ±

.XXX ±

ANG ±

PJECTION

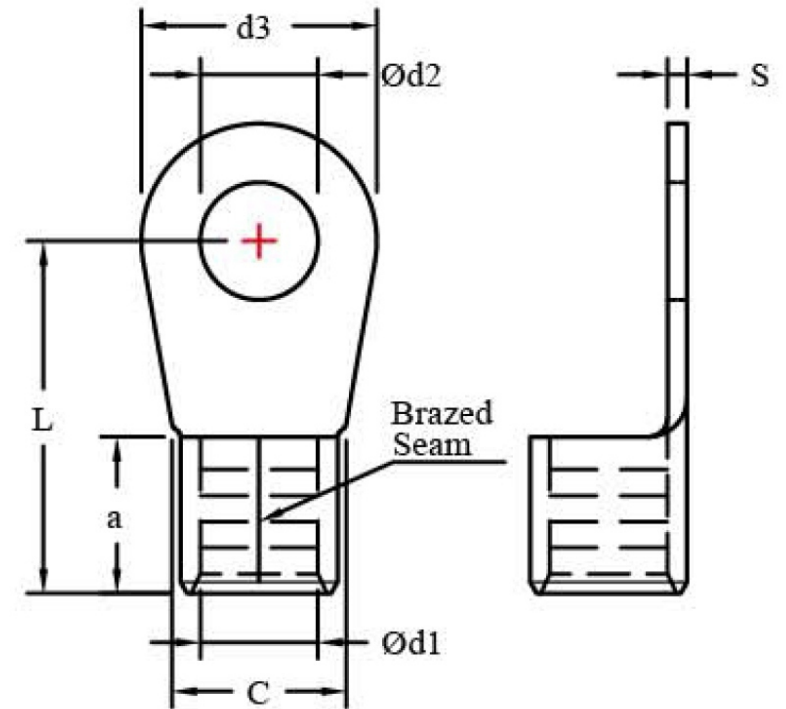


ORDER INFORMATION

RT-Xxx-xx-LF  
SERIES | LEADFREE  
14:14~16 AWG  
: A4:4/0 AWG  
d2: mm  
NON PVC

DESCRIPTION:

WIRE RANGE A.W.G. mm <sup>2</sup>	ITEM NO.	Stud Size	Dimensions (mm)						
		Metric	a	c	Ød1	Ød2	d3	L	s
6 A.W.G. 16 mm <sup>2</sup>	RT-X65-06	6	10.0	10.5	5.8	6.5	11.0	20.0	1.2
	RT-X84-06	8				8.4	14.0	22.0	
4 A.W.G. 25 mm <sup>2</sup>	RT-X65-04	6	11.0	12.0	7.5	6.5	12.0	25.0	1.5
	RT-X84-04	8				8.4	16.0	25.0	
	RT-X105-04	10				10.5	18.0	26.0	
2 A.W.G. 35 mm <sup>2</sup>	RT-X65-02	6	12.0	15.0	9.0	6.5	15.0	26.0	1.6
	RT-X84-02	8				8.4	16.0	26.0	
	RT-X105-02	10				10.5	18.0	27.0	
1/0 A.W.G. 50 mm <sup>2</sup>	RT-X65-A1	6	16.0	17.0	11.0	6.5	18.0	34.0	1.8
	RT-X80-A1	8				8.0	18.0	34.0	
	RT-X105-A1	10				10.5	18.0	34.0	
2/0 A.W.G. 70 mm <sup>2</sup>	RT-X84-A2	8	18.0	21.0	13.0	8.4	22.0	38.0	2.0
	RT-X105-A2	10				10.5	22.0	38.0	
3/0 A.W.G. 95 mm <sup>2</sup>	RT-X84-A3	8	20.0	23.0	15.0	8.4	24.0	42.0	2.5
	RT-X105-A3	10				10.5	24.0	42.0	
4/0 A.W.G. 120 mm <sup>2</sup>	RT-X105-A4	10	22.0	24.0	16.5	10.5	24.0	44.0	3.0



RoHS Compliant

TOLERANCES ARE

**MORETHANALL**  
PCB CONNECTORS  
Cable ASSEMBLIES

煜倫股份有限公司

www.morethanall.com

DRAWING BY CY

CHECKED BY GENIUS

UNIT / mm

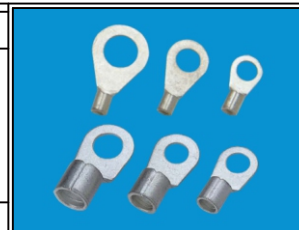
SCALE 1 : 1

DATE

SIZE A4

PPOJECTION

X, ±  
X, ±  
.XX ±  
.XXX ±  
ANG ±



ORDER INFORMATION

RT-Xxx-xx-LF  
SERIES | LEADFREE  
14:14~16 AWG  
A4:4/0 AWG  
d2: mm  
NON PVC

DESCRIPTION: