

# MATERIAL

INSULATION: NYLON

MATERIAL: BRASS

TIN PLATING

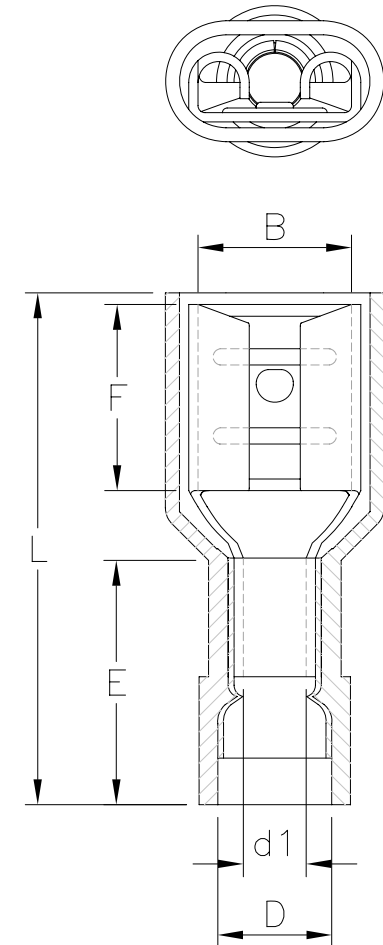
## MAXIMUM ELECTRIC CURRENT

A. W. G	22	20	18	16	14	12	10
MAX AMP	3	4	7	10	15	20	24

### NOTE:

1. MAXIMUM ELECTRICAL RATING: 105°C 300 VOLTS
2. REINFORCEMENT SLEEVE: C TYPE SLEEVE
3. WIRE RANGE: 22-16 AWG / 0.5-1.5 mm<sup>2</sup>  
INSULATED COLOR: RED
4. WIRE RANGE: 16-14 AWG / 1.5-2.5 mm<sup>2</sup>  
INSULATED COLOR: BLUE
5. WIRE RANGE: 12-10 AWG / 4-6 mm<sup>2</sup>  
INSULATED COLOR: YELLOW
6. MATERIAL THICKNESS: t  
TOLERANCE: ±0.05

WIRE RANGE AWG/mm <sup>2</sup>	產品編號 ITEM NO.	NEMA TAB	B ±0.20	F ±0.30	L ±1.00	E ±0.60	D ±0.50	d1 ±0.20	t
22-16 AWG 0.5-1.5 mm <sup>2</sup>	Q250-FT8NFC-16	0.8x6.4	6.6	7.9	22.0	10.5	4.2	1.7	0.4
16-14 AWG 1.5-2.5 mm <sup>2</sup>	Q250-FT8NFC-14	0.8x6.4	6.6	7.9	22.0	10.5	4.9	2.3	0.4
12-10 AWG 4-6 mm <sup>2</sup>	Q250-FT8NFC-10	0.8x6.4	6.6	7.9	24.5	13.0	6.5	3.4	0.4



RoHS Compliant

TOLERANCES ARE

**MORETHANALL**  
PCB CONNECTORS  
Cable ASSEMBLIES

DRAWING BY CY

X. ±

CHECKED BY GENIUS

.X ±

UNIT / mm

SCALE 1:1

.XXX ±

DATE

ANG ±

SIZE A4

PPOJECTION



### ORDER INFORMATION

Q250-FT8NFC-xx-LF

SERIES	10:10~12AWG	LEADFREE
FEMALE	14:14~16AWG	
TERMINAL	16:16~22AWG	
0.8mm TAB	COPPER	
	FULL	
	NYLON	

煜倫股份有限公司

www.morethanall.com

DESCRIPTION: