
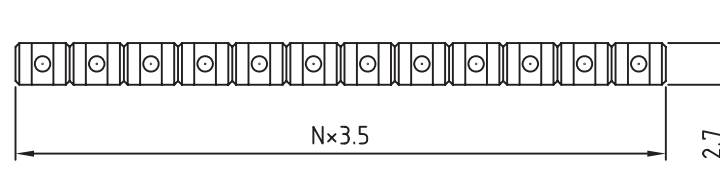
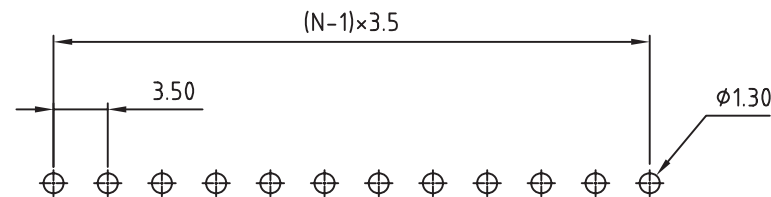
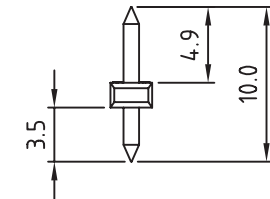
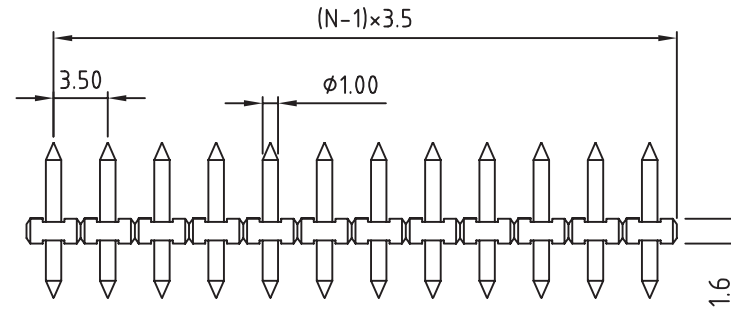


- Solid PIN: Brass(CuZn)
- Surface of solder tail: Tin plated
- Insulator(housing): Thermoplastic (UL94V-0)

- Electrical: cULus
- Voltage rating: 150V
 - Current rating: 10A
 - Withstanding Voltage: 1.3KV
 - Operating temperature: -30°C to +105°C
 - Soldering temperature: 245°C±10°C/5 Sec
 - Safety Approval: 



N = Number of contact



P.C.B. LAYOUT

RoHS Compliant

TOLERANCES ARE

MORETHANALL
PCB CONNECTORS
Cable ASSEMBLIES

DRAWING BY CY

X. ±

CHECKED BY GENIUS

.X ±

UNIT / mm

SCALE 1 : 1

.XX ±

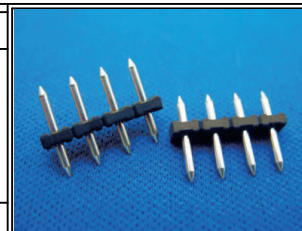
DATE

.XXX ±

ANG ±

SIZE A4

PJECTION 



ORDER INFORMATION

TBN035-PD-xx-LF

SERIES

LEADFREE

02~24WAY

DIP 180°

MALE

煜倫股份有限公司

www.morethanall.com

DESCRIPTION: