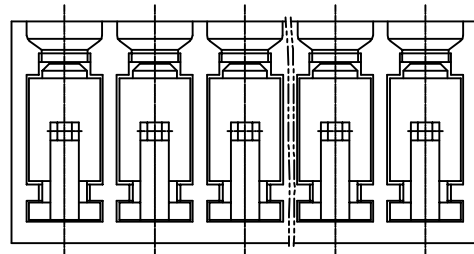
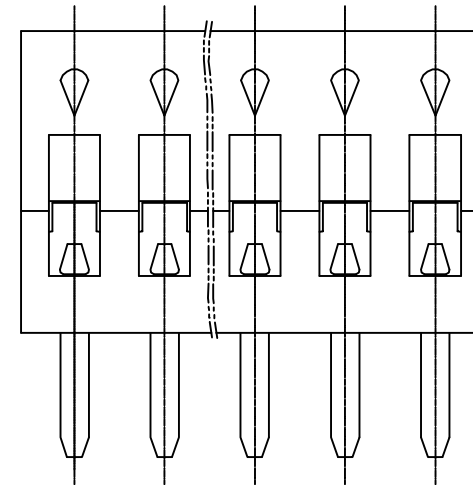
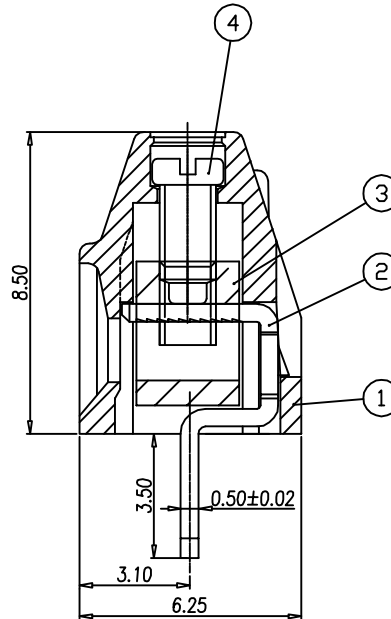
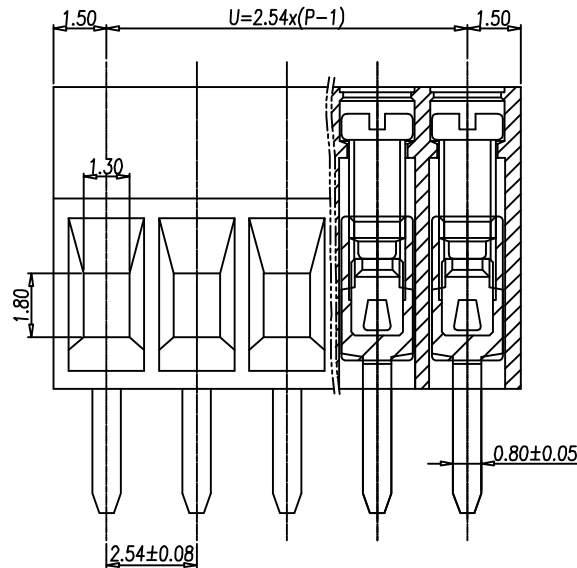


P.C.B. LAYOUT



NOTES:

1. Rating: UL 150V 8A
PITCH: 2.54mm
2. Insulation Withstands Voltage:
AC 1000V/MIN
3. Insulation Resistance:
1000MΩ or more at DC500V
4. Using Temperature Range:
-40°C~+130°C
5. Suitable Electric Wire: AWG28~16
6. Screw Torque Value: 2kgf-cm
7. Undimensioned Tolerances:

4	SCREW	P	STEEL	M1.6x0.35
3	WIRECAGE	P	HARD BRASS	Ni Plated
2	SOLDER PIN	P	COPPER	in Plated
1	HOUSING	1	PA66(V0)	GREEN
ITEM	NAME OF PART	Q'TY	MATERIAL	NOTES

RoHS Compliant

TOLERANCES ARE

MORETHANALL
PCB CONNECTORS
Cable ASSEMBLIES

DRAWING BY CY

CHECKED BY GENIUS

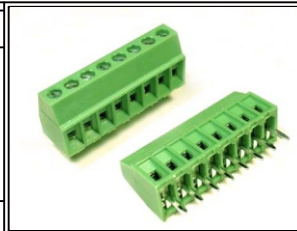
UNIT / mm SCALE 1 : 1

DATE

SIZE A4

X. ±
.X ±
.XX ±
.XXX ±
ANG ±

P PROJECTION



ORDER INFORMATION

TBH035-D08-xx-LF

SERIES | | LEADFREE
02-24WAY
HIGH 8.5mm
DIP 180°
NON POST

DESCRIPTION:

煜倫股份有限公司

www.morethanall.com