

9PIN	A	30.80±0.25	B	25.00±0.25	C	16.92±0.25
15PIN		39.20±0.25		33.32±0.25		25.25±0.25
25PIN		53.05±0.25		47.04±0.25		38.96±0.25
37PIN		69.40±0.25		63.50±0.25		55.42±0.25

Note:

Specification:

1. Current rating: 1 A Max.
2. Dielectric withstanding voltage: 500 V(ac) for 1 minute.
3. Contact resistance: 30 mΩ Max.
4. Insulation resistance: 1000 MΩ Min at DC 500V.
5. Mating force: 9.0 Kgf Max.
6. Unmating force: 3.2 Kgf Min.
7. Temperature range: -55°C~+105°C

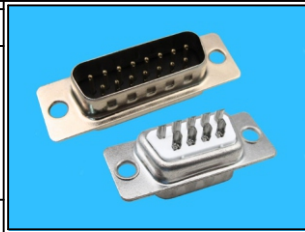
7	6.0 Nut	2	Brass	H4.75*6.0	80u"min Nickel Plated
6	8.0 Nut	2	Brass	H4.75*8.0	80u"min Nickel Plated
5	3B Nut	2	Brass	H4.75*4.75	80u"min Nickel Plated
4	Back-shell	1	Cold Rolled Steel	T=0.40mm	Cu:40u"min. 80u"min Tin Plated
3	Front-shell	1	Cold Rolled Steel	T=0.40mm	Cu:40u"min. 80u"min Nickel Plated
2	Contact	9 ~ 37	Brass	T=0.20mm	Contact area:0.8u"min Gold Plated over 40u"Nickel min. Solder area:80u"min Tin Plated over 40u"Nickel min.
1	Housing	1	P.B.T	UL 94-V0	Black/ White
No.	Part Name	Q'ty	Material	Remarks & Thickness	Finish

RoHS Compliant

TOLERANCES ARE



DRAWING BY CY
 CHECKED BY GENIUS
 UNIT / mm SCALE 1 : 1
 DATE
 X. ±
 .X ± 0.30
 .XX ± 0.20
 .XXX ± 0.10
 ANG ± 1°



ORDER INFORMATION

DS-PSxx-xx-LF
 SERIES | LEADFREE
 | 09~37WAY
 | WH:WHITE
 | BK:BLACK
 | SEMI GOLD
 MALE

煜倫股份有限公司

www.morethanall.com

SIZE A4 PPROJECTION

DESCRIPTION: D-SUB 9~37PIN(M)SOLDER一體