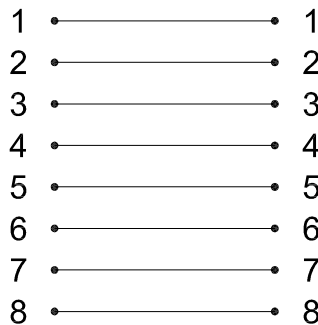


Circuit Diagram



Performance:

Meets C5e EIA/TIA 568B Standard.

Materials:

Body : Fireproof ABS UL-94V0

Metallic Case : Metal

Jack : 8P8C 50 micro inches gold plated
(Through-Pin)

Electrical Specifications:

Insulation Resistance : 500M ohms (min.)

Contact Resistance : 40m ohms (max.)

Current Rating : 1.5 Amps .

DC Resistance : 0.1 ohms (max.)

Withstanding Voltage : 1000 VAC RMS @ 60Hz / 1 min.

Mechanical Specifications:

Jack Insertion Cycle : Over 750 Cycles (min.)

Operation Temperature : -20 °C ~ +75 °C

RoHS Compliant

TOLERANCES ARE

MORETHANALL
PCB CONNECTORS
Cable ASSEMBLIES

DRAWING BY CY

CHECKED BY GENIUS

UNIT / mm

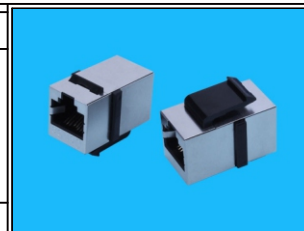
SCALE 1 : 1

DATE

SIZE A4

X. ±
.X ± 0.20
.XX ± 0.15
.XXX ±
ANG ±

PPOJECTION



ORDER INFORMATION

RJX2-FSC5EPN27FM-0808-LF

SERIES | PANEL | CAT.5E | 8P8C | FULL METAL | LONG 27.35mm | LEADFREE

FEMALE TO FEMALE 180°

DESCRIPTION: C5e INLINE COUPLER FTP

煜倫股份有限公司

www.morethanall.com