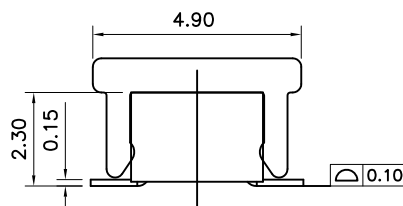
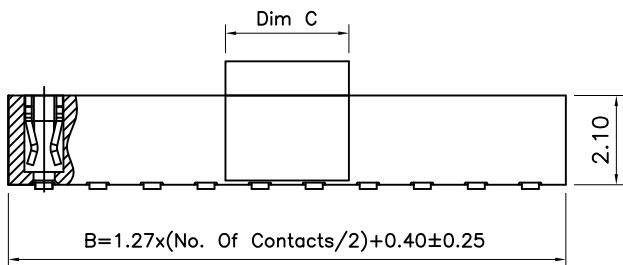


△ Note:  
 04&06 Pin  
 Dim C=2.92  
 08~40 Pin  
 Dim C=5.00

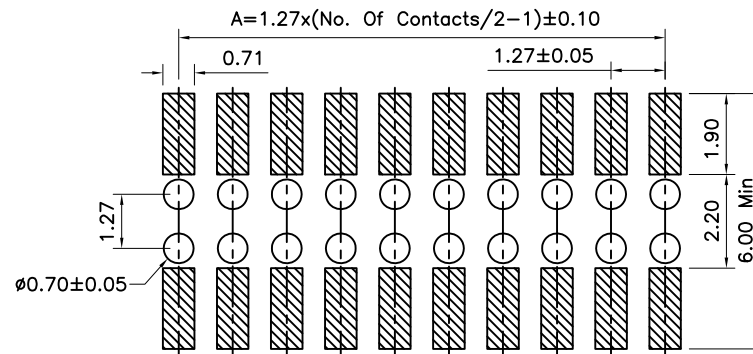


Specifications:  
 Current Rating:1.0A AC/DC  
 Voltage Rating:50V AC/DC  
 Contact Resistance:20m Ohm Max.  
 Insulation Resistance:1,000M Ohm Min.  
 Withstanding Voltage:500V AC/Minute  
 Operating Temperature Range:-25°C To +105°C

Material and Finish:  
 Insulator:High Temp. Plastic(LCP UL94V-0)  
 Insulator Color:Black  
 Contact:Phosphor Bronze  
 Plating:Gold/Tin/Selective Gold Plated

Dimension:

Pin No.	Dim A	Dim B	Pin No.	Dim A	Dim B
04	1.27	2.94	24	13.97	15.64
06	2.54	4.21	26	15.24	16.91
08	3.81	5.48	28	16.51	18.18
10	5.08	6.75	30	17.78	19.45
12	6.35	8.02	32	19.05	20.72
14	7.62	9.29	34	20.32	21.99
16	8.89	10.56	36	21.59	23.26
18	10.16	11.83	38	22.86	24.53
20	11.43	13.10	40	24.13	25.80
22	12.70	14.37			



PCB Layout

RoHS Compliant

TOLERANCES ARE

**MORETHANALL**  
 PCB CONNECTORS  
 Cable ASSEMBLIES

煜倫股份有限公司

www.morethanall.com

DRAWING BY CY

CHECKED BY GENIUS

UNIT/ mm

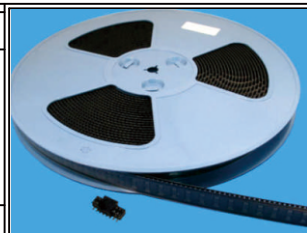
SCALE 1:1

DATE

SIZE A4

PJECTION

X. ±  
 .X ± 0.20  
 .XX ± 0.15  
 .XXX ±  
 ANG ±

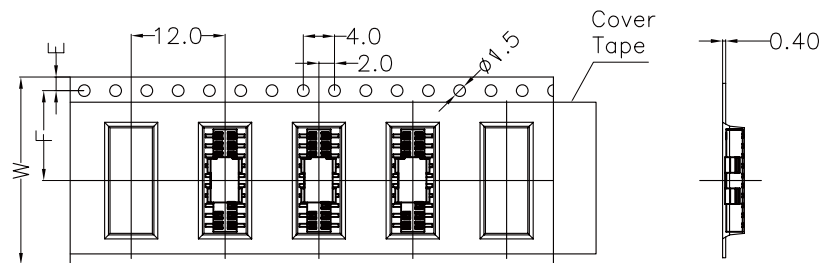
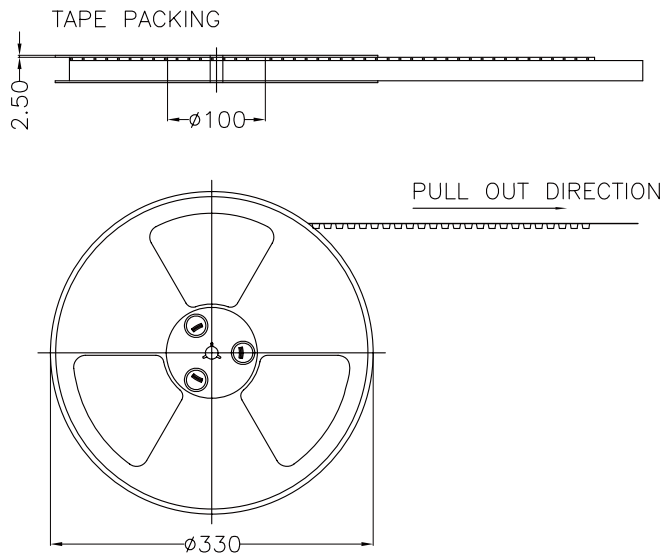


ORDER INFORMATION

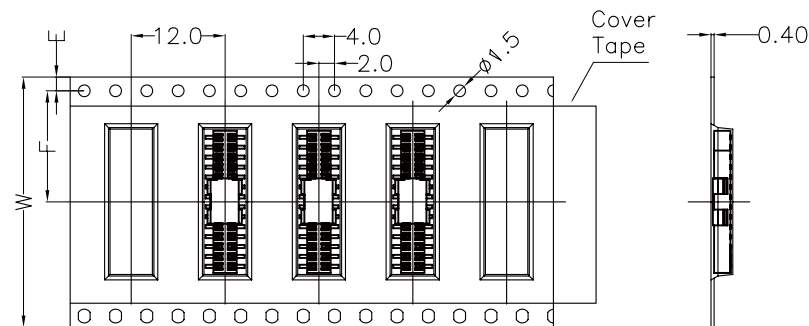
YA-Z23XCR-2Xxx-LF

SERIES  
 BOTTOM ENTRY SMT  
 HIGH 2.3mm  
 REEL  
 CAP  
 NON POST  
 LEADFREE  
 2X02:04WAY  
 2X40:80WAY

DESCRIPTION: 1.27mm PCB Socket SMD Top and Bottom Entry Type



For Reel width (dimension W) 16,24mm  
Single row hole



For Reel width (dimension W) 32,44,56,72mm  
Double rows hole

Pin.	W	F	Pcs/R	R/Cartron	Pcs/Cartron
04-12	16	7.5	1500	12	18000
14-20	24	11.5	1500	9	13500
22-28	32	14.2	1500	7	10500
30-50	44	20.2	1500	5	7500
52-70	56	26.2	1500	4	6000
72-80	72	34.2	1500	3	4500

Note:

- 1.All dimensions meet EIA-481-3 requirements.
- 2.Material: BK Conductive Polystyrene Alloy  
100% recyclable.
- 3.Thickness:  $0.40 \pm 0.05$ mm
- 4.Component load per 13" reel :1500 pcs.
- 5.Cartion Size:350\*350\*296(mm)

**RoHS Compliant**

TOLERANCES ARE



煜倫股份有限公司

www.morethanall.com

DRAWING BY CY

CHECKED BY GENIUS

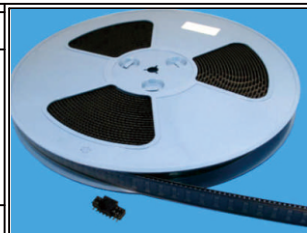
UNIT/mm SCALE 1:1

DATE

SIZE A4

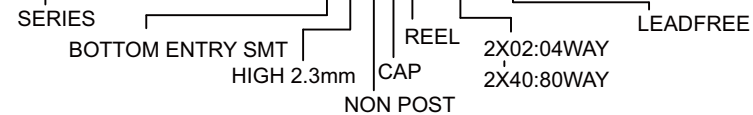
X,  $\pm$   
.X  $\pm$  0.20  
.XX  $\pm$  0.15  
.XXX  $\pm$   
ANG  $\pm$

PJECTION



**ORDER INFORMATION**

YA-Z23XCR-2Xxx-LF



DESCRIPTION: 1.27mm PCB Socket SMD Top and Bottom Entry Type