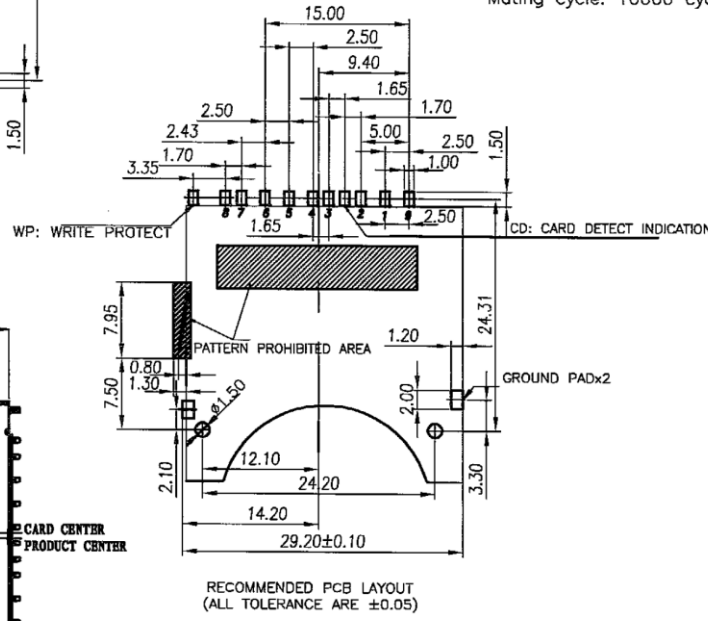
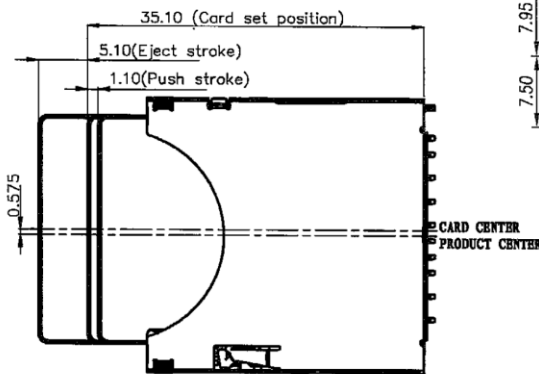


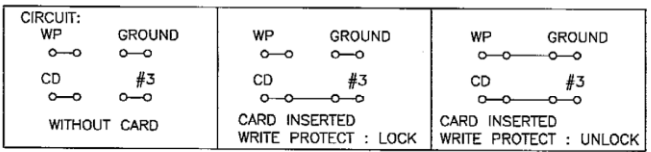
SPECIFICATION

1. Material:
 Insulator: LCP, rated UL94V-0, color: black.
 Contacts: Phosphor Bronze, Tin 160u" at Solder Tail, Selected Gold on Contact Area Plating.
 Ground: Phosphor Bronze, Tin 160u".
 Shell: Stainless.

2. Electrical Characteristics:
 Operating voltage : 50V(AC/DC).
 Current rating : 0.5 A.
 Operating Temperature: -25°C~+90°C.
 Insulation resistance: 1000M ohms min. at 500VDC
 Dielectric withstanding voltage: 500 VAC/1minute.
 Contact resistance: 100m ohms max.
 Mating cycle: 10000 cycles, spring is not breaking.

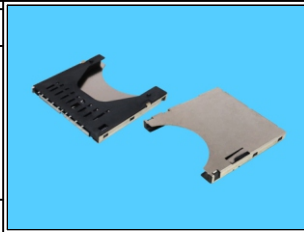


Pin No.		SD	MMC
P1	MMC-DAT3 SD-CD/DAT3	1P	1P
P2	MMC-CMD SD-CMD	2P	2P
P3	MMC-VSS1 SD-VSS1	3P	3P
P4	MMC-VDD SD-VDD	4P	4P
P5	MMC-CLK SD-CLK	5P	5P
P6	MMC-VSS2 SD-VSS2	6P	6P
P7	MMC-DAT0 SD-DAT0	7P	7F
P8	SD-DAT1	8P	
P9	SD-DAT2	9P	



RoHS Compliant

TOLERANCES ARE
 X, ±
 .X ± 0.30
 .XX ± 0.20
 .XXX ± 0.10
 ANG ±



ORDER INFORMATION

SDC-W24PB02-09-LF
 SERIES | | | | | LEADFREE
 90°SMT | | | | | PAD 0+2
 | | | | | B TYPE
 | | | | | PUSH PUSH
 | | | | | POST TO POST 24.2mm

MORETHANALL
 PCB CONNECTORS
 Cable ASSEMBLIES
 煜倫股份有限公司
 www.morethanall.com

DRAWING BY CY
 CHECKED BY GENIUS
 UNIT / mm SCALE 1 : 1
 DATE
 SIZE A4 PROJECTION

DESCRIPTION: