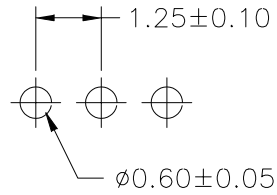
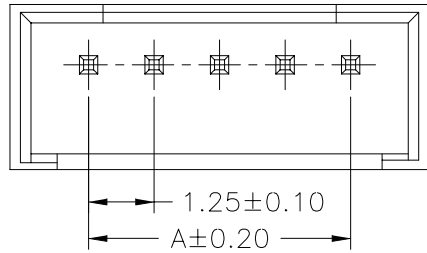
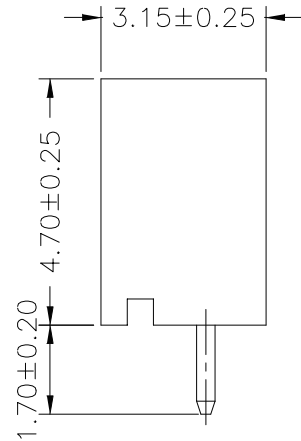
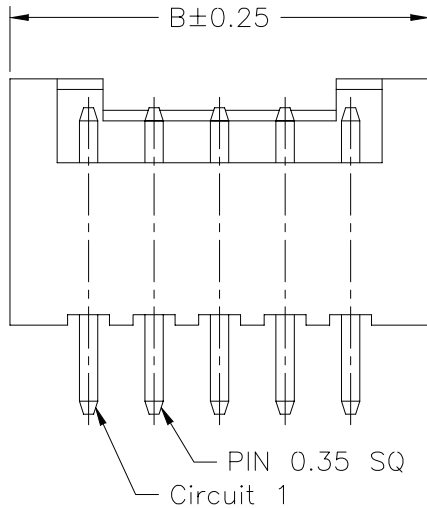


SPECIFICATIONS

Current Rating: 1A AC,DC
 Voltage Rating: 100V AC,DC
 Temperature Range: -25°C ~ +85°C
 Contact Resistance: 20mΩ Max.
 Insulation Resistance: 500MΩ Min.
 Withstanding Voltage: 500V AC/minute
 Pin Material: Brass/Tin-plated
 Material: Nylon 66,UL94V-0



P.C.B LAYOUT



Ordering Information & Dimensions

PART NO.	Dimensions	
	A	B
ILZ-D-02	1.25	4.25
ILZ-D-03	2.50	5.50
ILZ-D-04	3.75	6.75
ILZ-D-05	5.00	8.00
ILZ-D-06	6.25	9.25
ILZ-D-07	7.50	10.50
ILZ-D-08	8.75	11.75
ILZ-D-09	10.00	13.00
ILZ-D-10	11.25	14.25
ILZ-D-11	12.50	15.50
ILZ-D-12	13.75	16.75
ILZ-D-13	15.00	18.00
ILZ-D-14	16.25	19.25
ILZ-D-15	17.50	20.50

RoHS Compliant

TOLERANCES ARE

MORETHANALL
 PCB CONNECTORS
 Cable ASSEMBLIES

煜倫股份有限公司

www.morethanall.com

DRAWING BY CY

CHECKED BY GENIUS

UNIT / mm

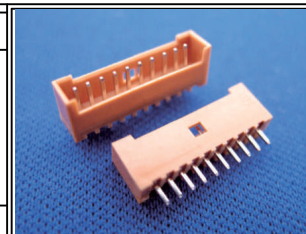
SCALE 1:1

DATE

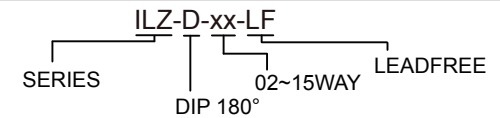
SIZE A4

P PROJECTION

X, ±
 .X ±
 .XX ±
 .XXX ±
 ANG ±



ORDER INFORMATION



DESCRIPTION: 1.25mm PITCH 180° WAFER