

NOTES:

1. MATERIAL:
 - (1) HOUSING: THERMOPLASTIC; COLOR IN BLACK, UL94V-0 RATED.
 - (2) CONTACT AND GROUNDING LUG: HIGH PERFORMANCE COPPER ALLOY. THICKNESS=0.10mm.
2. CONTACT FINISH: UNDERPLATING NICKEL 50u" OVERALL. SELECTED GOLD ON CONTACT AREA. (SEE TABLE A) SELECTED LEAD FREE TIN 120u" ON SOLDER TAIL.
3. PACKING: SEE TABLE A.

RoHS Compliant

TOLERANCES ARE



煜倫股份有限公司

www.morethanall.com

DRAWING BY CY

CHECKED BY GENIUS

UNIT / mm

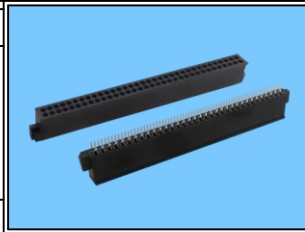
SCALE 1 : 1

DATE

SIZE A4

PJECTION

X, ±
 .X ± 0.25
 .XX ± 0.15
 .XXX ± 0.05
 ANG ±



ORDER INFORMATION

PCC-SWA-68-LF
 SERIES | | | LEADFREE
 | | | 68WAY
 | | | 1/ROW
 | | | 90°SMT
 | | | FEMALE

DESCRIPTION: 68 PIN CONN. , OFFSET 0.0mm SMT