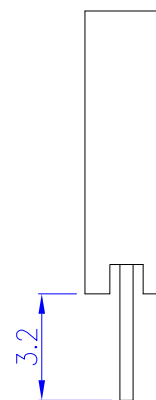
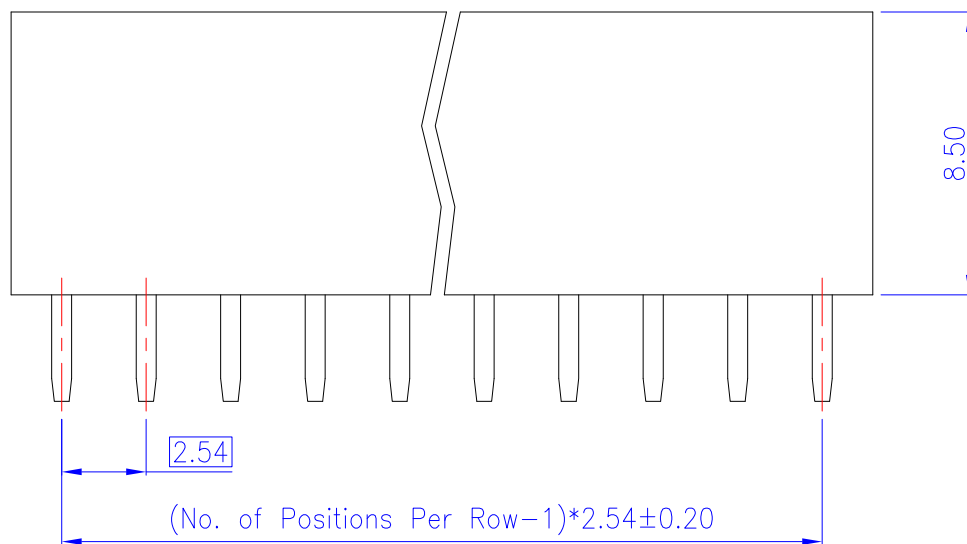


PCB Layout
(Top View)



Material and Finish

1. Housing: Thermoplastic (UL94V-0), Black.
2. Terminal: Copper Alloy (t=0.40mm), Gold Plating.

Electrical Characteristics

1. Current Rating: 3.0 Amp. Max..
2. Dielectric Withstand Voltage:
1000V AC RMS for 60Seconds.
3. Insulation Resistance:
1000M Ohms Min. at 1000V DC.
4. Contact Resistance: 30m Ohms Max.

Mechanical Characteristics

1. Operating Temperature: -55°C ~ +105°C

RoHS Compliant

TOLERANCES ARE

MORETHANALL
PCB CONNECTORS
Cable ASSEMBLIES

DRAWING BY CY

X. ±

CHECKED BY GENIUS

.X ± 0.30

UNIT / mm

SCALE 1 : 1

.XX ± 0.20

DATE

.XXX ± 0.10

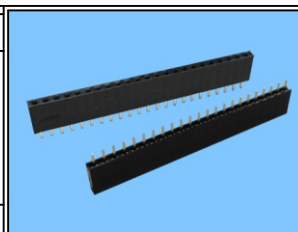
ANG ±

煜倫股份有限公司

www.morethanall.com

SIZE A4

PPOJECTION



ORDER INFORMATION

F-DN6T-1Xxx-LF
SERIES LEADFREE
1X02:02 WAY
1X40:40 WAY
NYLON 6T
DIP 180°

DESCRIPTION: 2.54mm Post Header Receptacle PCB Mount Vertical Type Single Row (H=8.50mm)