

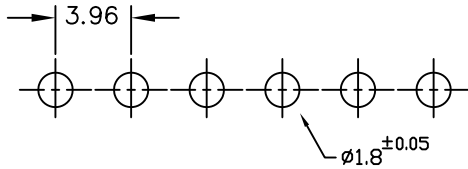
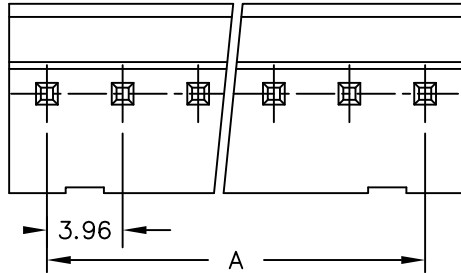
SPECIFICATIONS

Electrical

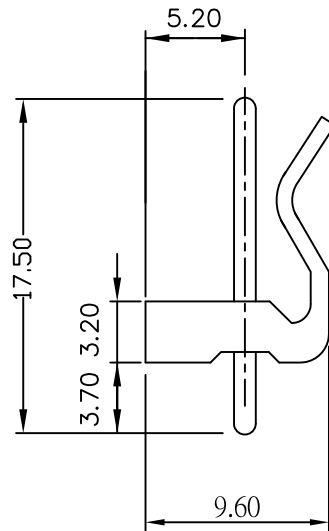
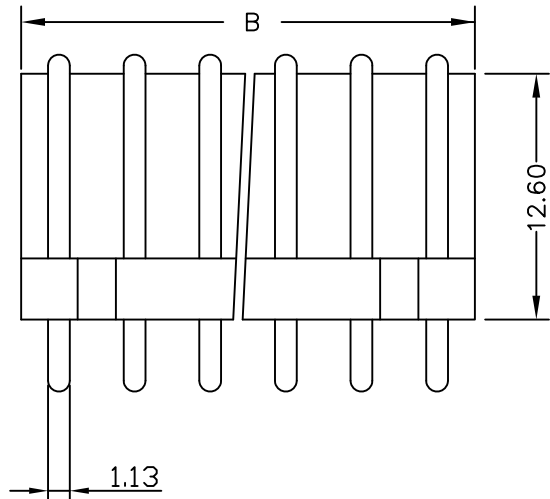
Current Rating: 5A AC, DC
 Voltage Rating: 250V AC, DC
 Operating Temp.: -25°C ~ +85°C
 Insulation Resistance: 1000MΩ/ min.
 Dielectric Withstanding Voltage: 1500V AC/ min.
 Contact Resistance: 10mΩ/ max.

Material

Material: Nylon66, UL94V-2



RECOMMENDED P.C.BOARD HOLE DIMM.



Poles	Dimension mm (in.)		Part No.	Note.
	A	B		
2	3.96	7.92	KK-DRP-02	
3	7.92	11.88	KK-DRP-03	
4	11.88	15.84	KK-DRP-04	
5	15.84	19.80	KK-DRP-05	
6	19.80	23.76	KK-DRP-06	
7	23.76	27.72	KK-DRP-07	
8	27.72	31.68	KK-DRP-08	
9	31.68	35.64	KK-DRP-09	
10	35.64	39.60	KK-DRP-10	
11	39.60	43.56	KK-DRP-11	
12	43.56	47.52	KK-DRP-12	

RoHS Compliant

TOLERANCES ARE

MORETHANALL
 PCB CONNECTORS
 Cable ASSEMBLIES

煜倫股份有限公司

www.morethanall.com

DRAWING BY CY

CHECKED BY GENIUS

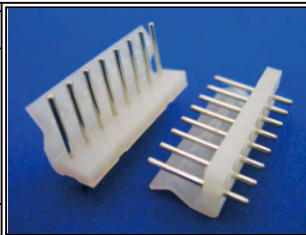
UNIT/ mm SCALE 1:1

DATE

SIZE A4

X. ±
 .X ±
 .XX ±
 .XXX ±
 ANG ±

PJECTION



ORDER INFORMATION

KK-DRP-xx-LF
 SERIES | LEADFREE
 02-12WAY
 ROUND PIN
 DIP 180°

DESCRIPTION: 3.96mm Wire-to-Board Header Dip 180° Type