

**SPECIFICATION**

**MATERIAL**

Insulator: PBT, rated UL94V-0 (standard)  
 Contacts: Brass (standard) ; Phosphor Bronze (choose)  
 Shell: Steel

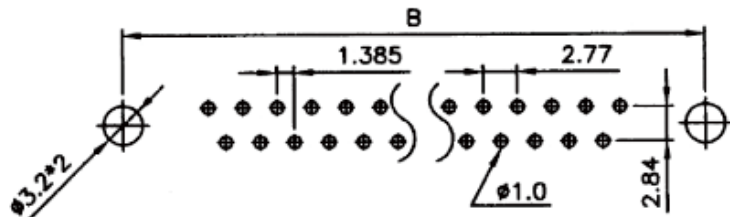
Rivet, Boardlock: Copper alloy

**CONTACT PLATING**

Underplate: 50u" Nickel  
 Contact area: 1u"~30u" Selective Gold  
 Solder tails area: 100u" Tin/Lead

**ELECTRICAL**

Operation voltage: 250 VAC max.  
 Current rating: 3 Amps max.  
 Contact resistance: 15 mohms max.  
 Insulation resistance: 3000 Mohms min @ 500 VDC  
 Dielectric withstanding voltage: 1000 VAC / minute  
 Operating temperature: -55°C TO +105°C



RECOMMENDED P.C.B LAYOUT(TOP VIEW)

POSITION	A	B	C
9P	16.30	25.00	30.8
15P	24.60	33.30	39.2
23P	35.30	44.30	50.3
25P	38.30	47.10	53.1
37P	54.80	63.50	69.4

**RoHS Compliant**

TOLERANCES ARE

**MORETHANALL**  
 PCB CONNECTORS  
 Cable ASSEMBLIES

DRAWING BY CY

CHECKED BY GENIUS

UNIT / mm

SCALE 1 : 1

DATE

SIZE A4

X, ±

.X ±

.XX ±

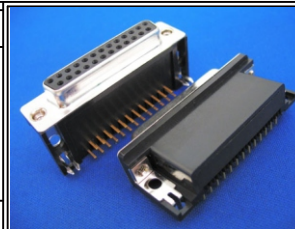
.XXX ±

ANG ±

煜倫股份有限公司

www.morethanall.com

PJECTION



**ORDER INFORMATION**

DRL-SGN-xx-LF  
 SERIES | | | LEADFREE  
 | | | 09~37WAY  
 | | | NUT  
 | | | FULL GOLD  
 | | | FEMALE

DESCRIPTION: