

MATERIAL

INSULATION: NYLON

MATERIAL: BRASS

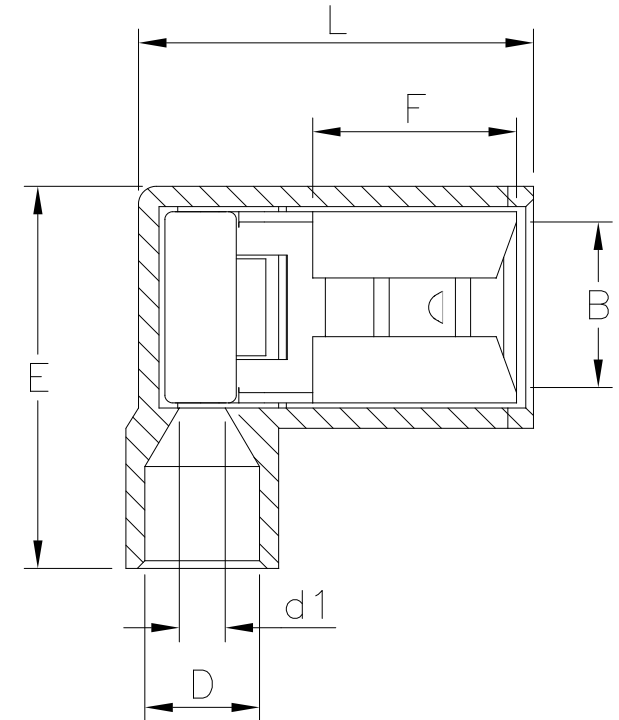
TIN PLATING

MAXIMUM ELECTRIC CURRENT

A. W. G	22	20	18	16	14
MAX AMP	3	4	7	10	15

NOTE:

1. MAXIMUM ELECTRICAL RATING: 105°C 300 VOLTS
2. WIRE RANGE: 22-18 AWG / 0.5-1.5 mm²
INSULATED COLOR: RED
3. WIRE RANGE: 16-14 AWG / 1.5-2.5 mm²
INSULATED COLOR: BLUE
4. MATERIAL THICKNESS: t
TOLERANCE: ±0.05



WIRE RANGE AWG/mm ²	產品編號 ITEM NO.	NEMA TAB	B ±0.20	F ±0.30	L ±0.60	E ±0.60	D ±0.50	d1 ±0.20	t
16-14 AWG 1.5-2.5 mm ²	Q250-GT8NF-14	0.8x6.4	6.6	7.9	15.5	15.0	4.5	2.3	0.45

RoHS Compliant

TOLERANCES ARE

MORETHANALL
PCB CONNECTORS
Cable ASSEMBLIES

煜倫股份有限公司

www.morethanall.com

DRAWING BY CY

CHECKED BY GENIUS

UNIT / mm

SCALE 1:1

DATE

SIZE A4

PJECTION

X. ±
.X ±
.XX ±
.XXX ±
ANG ±



ORDER INFORMATION

Q250-GT8NF-14-LF
SERIES | | | | | LEADFREE
FLAG | | | | | 14-16AWG
FULL
NYLON
0.8t
TERMINAL

DESCRIPTION: