

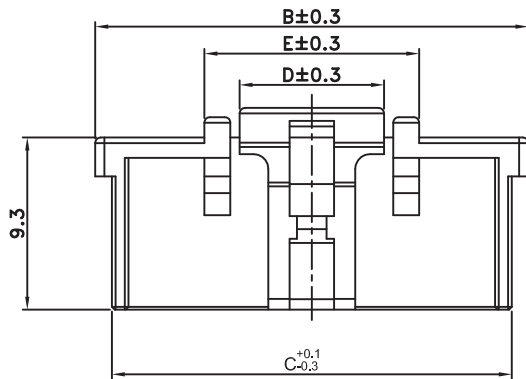
20PIN 3D VIEW

■ SPECIFICATIONS

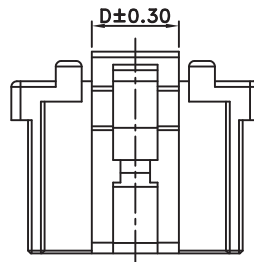
- Current Rating : 3.0A AC/DC
- Withstanding Voltage : 1,000V AC/minute
- Insulation Resistance : 1,000MΩ min.
- Temperature Range : - 25°C to + 85°C
- Contact Resistance : 20mΩ max.

■ HOUSING

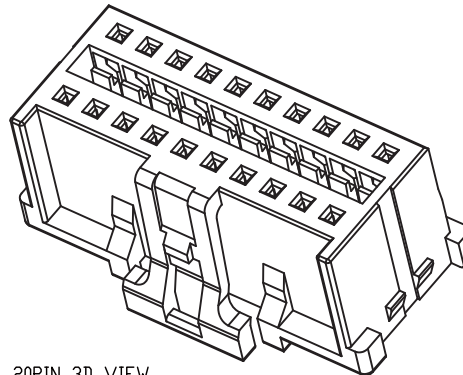
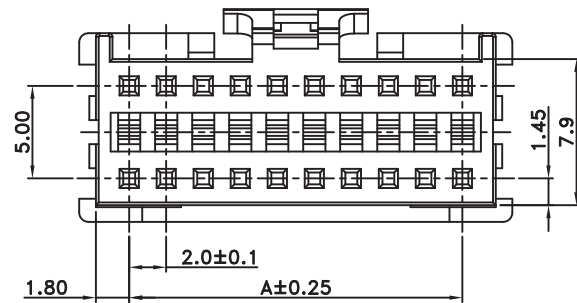
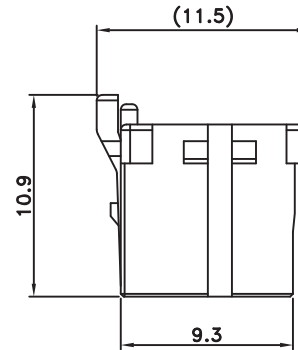
- Poles : 2x4 ~ 2x20
- Material : Nylon 66 UL94V-0 Color : White
- Q'ty: 1,000 Pcs/Bag



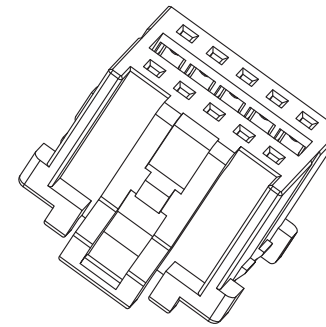
6X2~20X2 PIN



4X2~5X2 PIN



20PIN 3D VIEW



2X5 3D VIEW

Poles	Dimension(mm)				
	A	B	C	D	E
2x4	6.0	11.4	9.6	4.7	8.4
2x5	8.0	13.4	11.6	4.7	8.4
2x6	10.0	15.4	13.6	7.8	11.6
2x7	12.0	17.4	15.6	7.8	11.6
2x8	14.0	19.4	17.6	7.8	11.6
2x9	16.0	21.4	19.6	7.8	11.6
2x10	18.0	23.4	21.6	7.8	11.6
2x11	20.0	25.4	23.6	7.8	11.6
2x12	22.0	27.4	25.6	7.8	11.6
2x13	24.0	29.4	27.6	7.8	11.6
2x14	26.0	31.4	29.6	7.8	11.6
2x15	28.0	33.4	31.6	7.8	11.6
2x16	30.0	35.4	33.6	7.8	11.6
2x17	32.0	37.4	35.6	7.8	11.6
2x18	34.0	39.4	37.6	7.8	11.6
2x19	36.0	41.4	39.6	7.8	11.6
2x20	38.0	43.4	41.6	7.8	11.6

RoHS Compliant

TOLERANCES ARE

**MORETHANALL**  
PCB CONNECTORS  
Cable ASSEMBLIES

DRAWING BY CY

CHECKED BY GENIUS

UNIT / mm

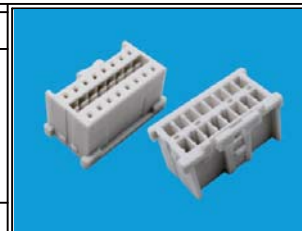
SCALE 1 : 1

DATE

SIZE A4

X, ±  
.X ± 0.30  
.XX ± 0.20  
.XXX ± 0.10  
ANG ±

PJECTION



ORDER INFORMATION

MCL-H-2Xxx-LF  
SERIES | LEADFREE  
2X04:08WAY  
HOUSING | 2X20:40WAY

煜倫股份有限公司

www.morethanall.com

DESCRIPTION: