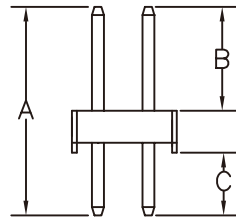
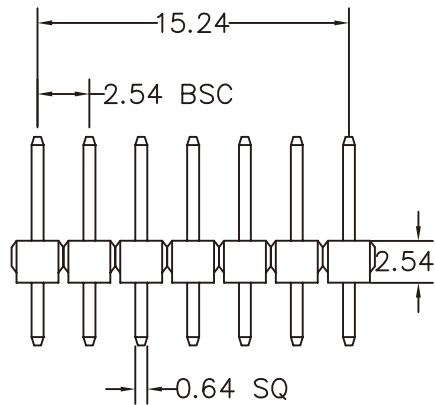


RECOMMENDED P.C.B LAYOUT



A: 19.54 mm B: 6.00 mm C: 11.00 mm

MATERIAL

HOUSING : THERMOPLASTIC UL94V-0

CONTACT : COPPER ALLOYS

SPECIFICATION

CURRENT: 3A

OPERATING TEMPERATURE: -55°C TO +105°C

CONTACT RESISTANCE : 20 MILLIOHMS MAX

INSULATION RESISTANCE : 1000 MEGAOHMS MIN

WITHSTANDING VOLTAGE: AC 1000V RMS

RoHS Compliant

TOLERANCES ARE

MORETHANALL
PCB CONNECTORS
Cable ASSEMBLIES
煜倫股份有限公司

DRAWING BY CY

CHECKED BY GENIUS

UNIT/ mm

SCALE 1:1

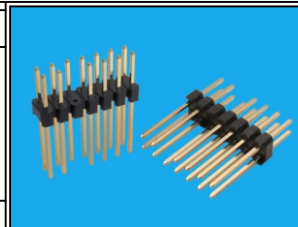
DATE

X. ±
.X ±
.XX ±
.XXX ±
ANG ±

www.morethanall.com

SIZE A4

PPOJECTION



ORDER INFORMATION

H-D195060110-2X07E5-LF
SERIES | 14WAY | LEADFREE
DIP 180° | CONTACT 6.0mm | EMPTY#5
DIP:11.0mm
TOTAL LENGTH 19.54mm

DESCRIPTION: