

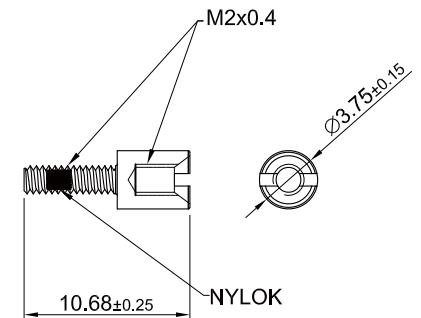
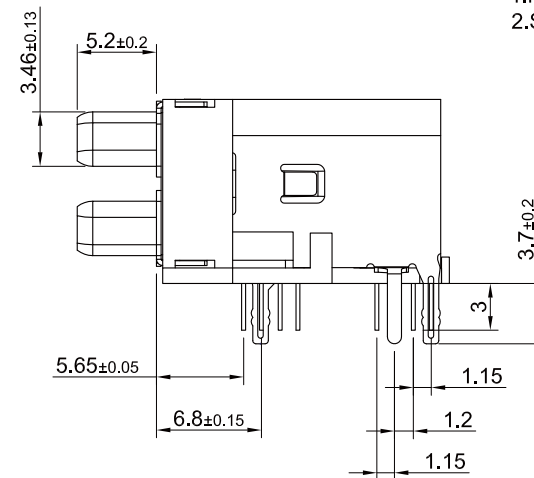
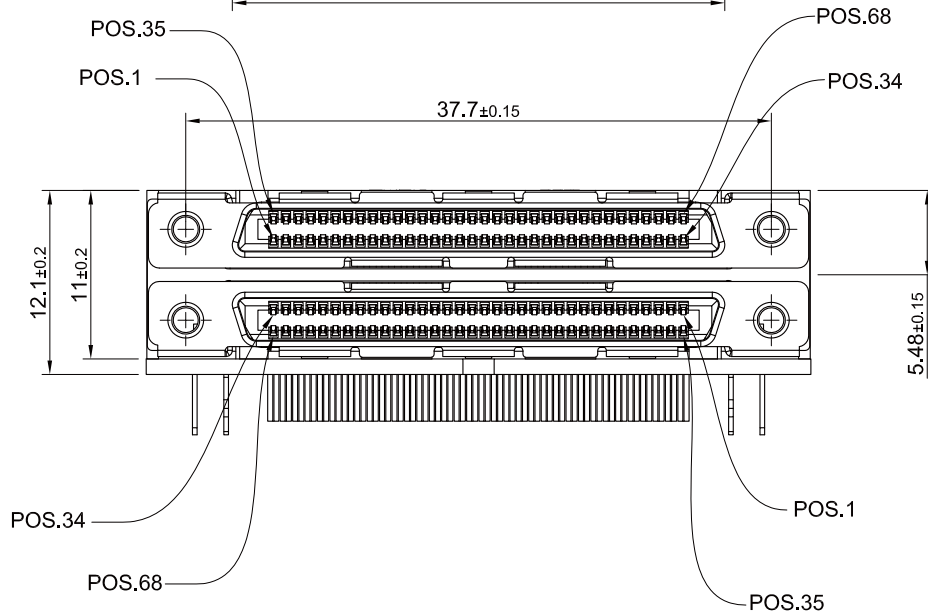
**ELECTRICAL CHARACTERISTICS**  
 CONTACT CURRENT RATING:0.5AMPERE  
 DIELECTRIC WITHSTANDING VOLTAGE:250 VAC  
 INSULATION RESISTANCE:500 MEGOHMS MIN.  
 CONTACT RESISTANCE:80 MILLIOHMS MAX.

**MATERIALS**  
 CONTACTS:COPPER ALLOY  
 INSULATOR:THERMOPLASTIC 94V-0  
 SHELL:COLD ROLLER STEEL

**FINISHES**  
 CONTACT:30 μ" MIN. GOLD ON MATING END;  
 TIN ON TERMINATION END;  
 ALL UNDERPLATED NICKEL  
 SHELL:NICKEL OVER COPPER

**ENVIRONMENT**  
 OPERATION TEMPERATURE: -55°C TO +85°C

**NOTES**  
 1.MATERIAL:STEEL,NICKEL PLATED  
 2.SHIP WITH FOUR STAND-OFFS



REFERRAL TORQUE=2kgf-cm~2.5kgf-cm

**RoHS Compliant**

TOLERANCES ARE

**MORETHANALL**  
 PCB CONNECTORS  
 Cable ASSEMBLIES

DRAWING BY CY

X.±

CHECKED BY GENIUS

.X±

UNIT / mm

SCALE 1 : 1

.XX±

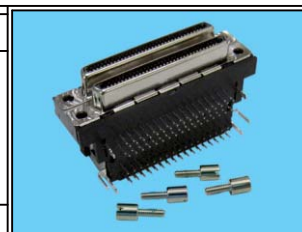
DATE

.XXX±

ANG ±

SIZE A4

PPOJECTION



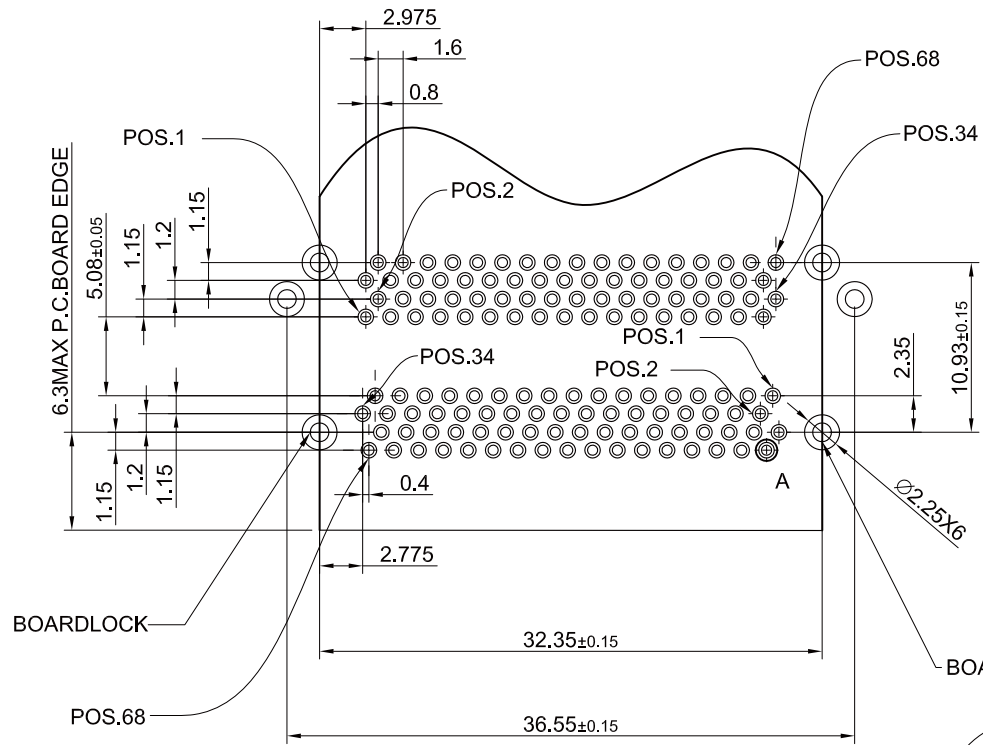
**ORDER INFORMATION**

VHCB1-SRNZ1H-068-LF  
 SERIES | | | | LEADFREE  
 | | | | 68 WAY  
 | | | | HEX SCREW  
 FEMALE | | CLIP  
 | | NUT  
 | | DIP 90°

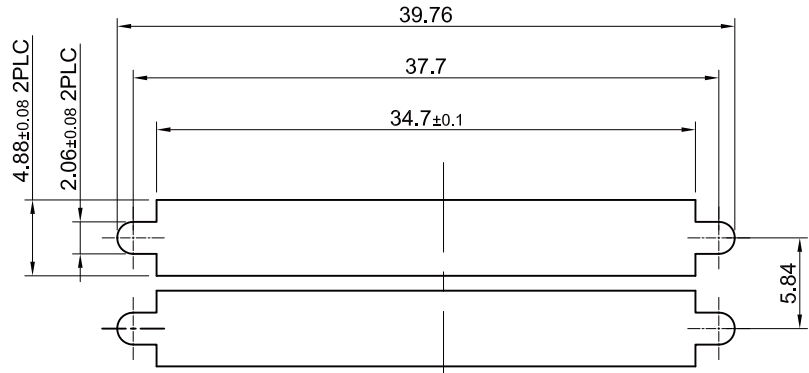
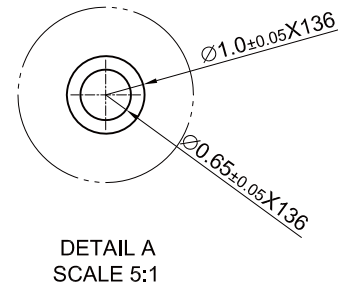
DESCRIPTION: VHDCI 0.8mm Dual-Port Right Angle Receptacle

**煜倫股份有限公司**

www.morethanall.com



RECOMMENDED P.C. BOARD LAYOUT  
(REFERENTIAL LAYOUT)  
TOLERANCE: ±0.05



PANEL CUT-OUT DIMENSIONS

**MORETHANALL**  
PCB CONNECTORS  
Cable ASSEMBLIES

煜倫股份有限公司

www.morethanall.com

RoHS Compliant

DRAWING BY CY

CHECKED BY GENIUS

UNIT / mm

SCALE 1 : 1

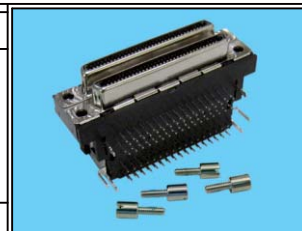
DATE

SIZE A4

TOLERANCES ARE

X, ±  
.X ± 0.15  
.XX ± 0.10  
.XXX ±  
ANG ± 1°

PJECTION



ORDER INFORMATION

VHCBI-SRNZ1H-068-LF

SERIES | | | | LEADFREE  
68 WAY  
HEX SCREW  
FEMALE | CLIP  
NUT  
DIP 90°

DESCRIPTION: VHDCI 0.8mm Dual-Port Right Angle Receptacle