

Specification

- 1.Current Rating:0.5A AC/DC
- 2.Voltage Rating:30V AC/DC
- 3.Contact Resistance:20mΩ Max.
- 4.Insulation Resistance:100MΩ Min.
- 5.Withstand Voltage:AC200V/Minute
- 6.Operating Temperature:-25°C~+85°C

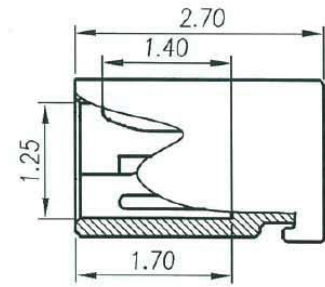
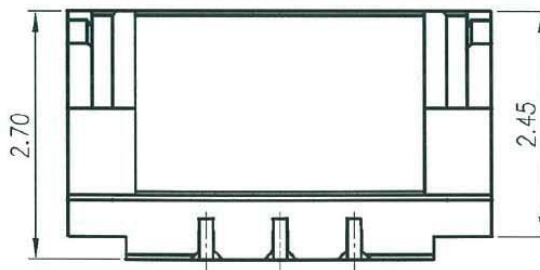
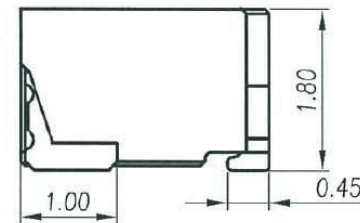
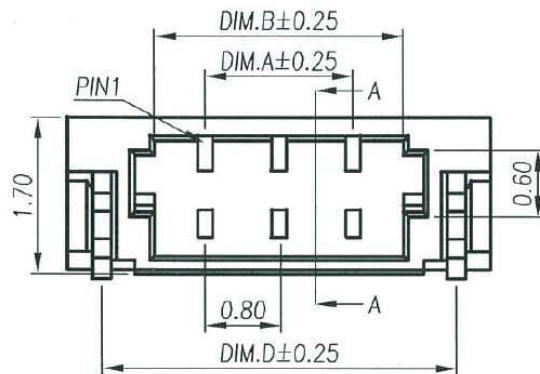
Material:

- 1.Housing:Thermoplastic UL94V-0
- 2.Contact Pin:Copper Alloy T=0.15
- 3.Tab:Copper Alloy T=0.20

Finish:

- 1.Housing:Natural
- 2.Contact Pin:Gold Plated
- 3.Tab:Gold Plated

RECOMMENDED P.C.B LAYOUT



PIN	DIM.A	DIM.B	DIM.C	DIM.D	PIN	DIM.A	DIM.B	DIM.C	DIM.D
02	0.80	1.90	3.78	3.04	08	5.60	6.70	8.58	7.84
03	1.60	2.70	4.58	3.84	10	7.20	8.30	10.18	9.44
04	2.40	3.50	5.38	4.64	12	8.80	9.90	11.78	11.04
05	3.20	4.30	6.18	5.44	14	10.40	11.50	13.38	12.64
06	4.00	5.10	6.98	6.24	16	12.00	13.10	14.98	14.24
07	4.80	5.90	7.78	7.04	20	15.20	16.30	19.18	17.44

RoHS Compliant



煜倫股份有限公司

www.morethanall.com

DRAWING BY CY

CHECKED BY GENIUS

UNIT/mm SCALE 1:1

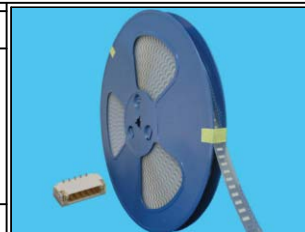
DATE

SIZE A4

TOLERANCES ARE

- X. ±
- .X ±
- .XX ±
- .XXX ±
- ANG ±

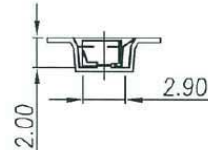
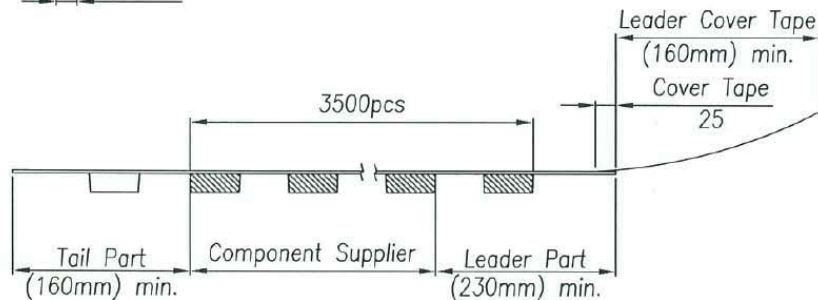
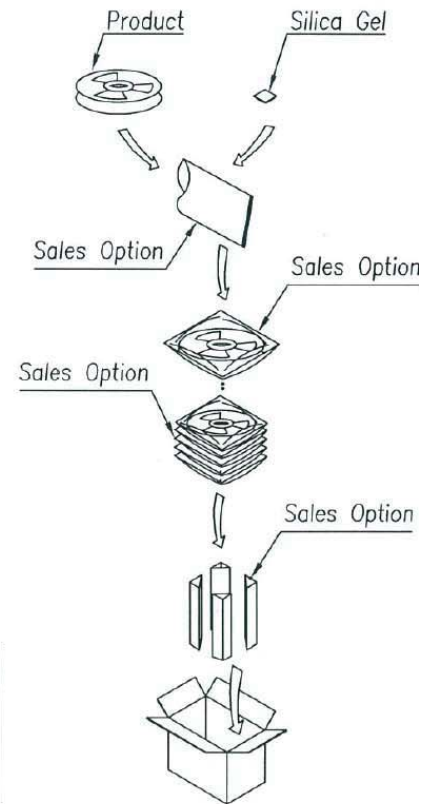
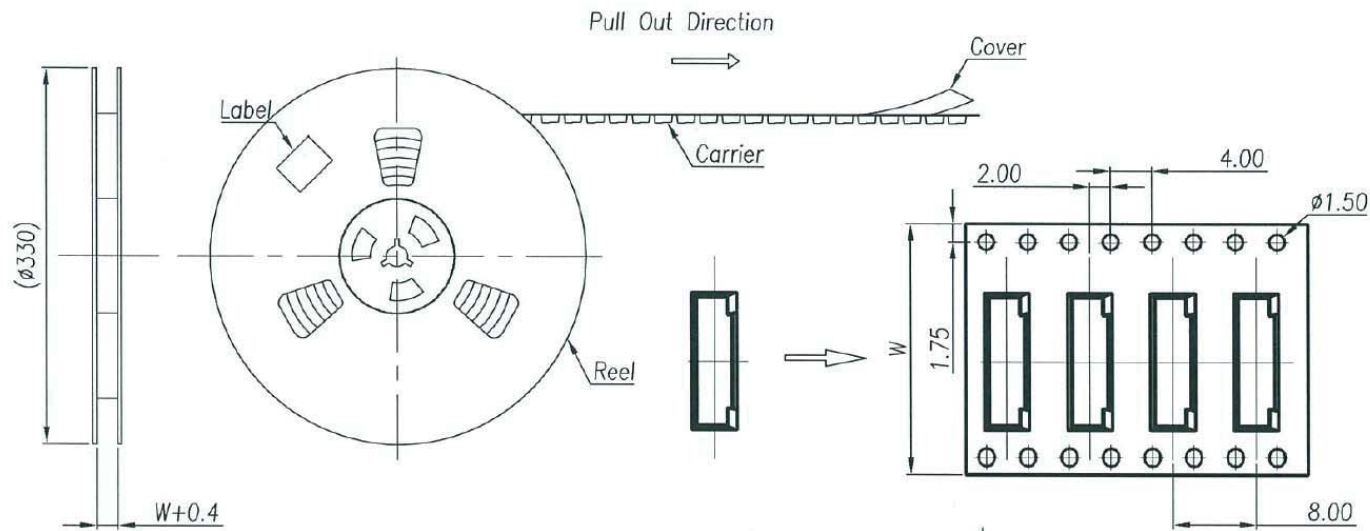
PJECTION



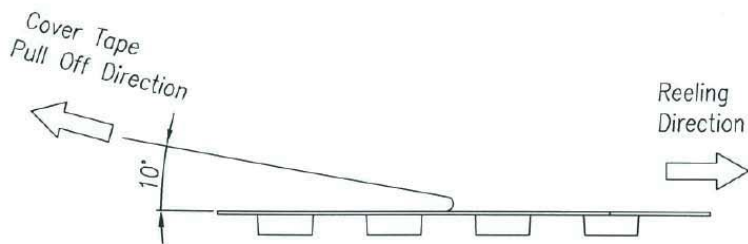
ORDER INFORMATION

SUR-WR-xx-LF
 SERIES | | LEADFREE
 | | 02~20WAY
 | REEL
 90° SMT

DESCRIPTION: SUR0.8mm Wire to Board Wafer SMT 90°



No Of Pin	W	Pcs/Reel
2~4	12	3500
5~9	16	
10~19	24	
20~22	32	



RoHS Compliant

TOLERANCES ARE

MORETHANALL
PCB CONNECTORS
Cable ASSEMBLIES

DRAWING BY CY

CHECKED BY GENIUS

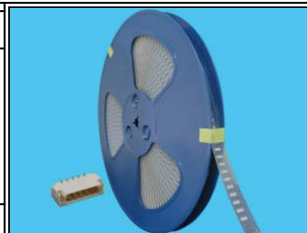
UNIT/mm SCALE 1:1

DATE

SIZE A4

X. ±
.X ±
.XX ±
.XXX ±
ANG ±

PJECTION



ORDER INFORMATION

SUR-WR-xx-LF
SERIES | | LEADFREE
| | 02~20WAY
| REEL
90° SMT

煜倫股份有限公司

www.morethanall.com

DESCRIPTION: SUR0.8mm Wire to Board Wafer SMT 90°