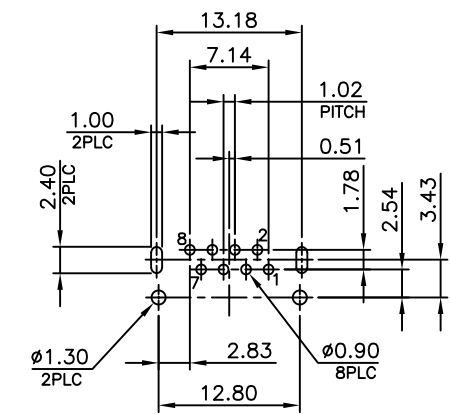


NOTE:
 CAVITY CONFIRMS TO FCC RULES AND REGULATIONS PART 68, SUBPART F.

1. MATERIAL:
 1.1 HOUSING: PA9T, WITH GLASS FIBER, UL94V-0, STANDARD COLOR-BLACK.
 1.2 INSERT HOUSING: PA9T, WITH GLASS FIBER, UL94V-0, STANDARD COLOR-BLACK.
 1.3 CONTACTS: PHOSPHOR BRONZE.
 1.4 SHELL: BRASS.

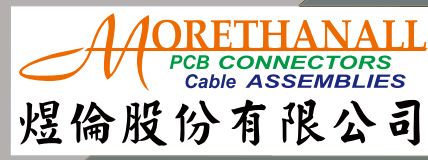
2. FINISH:
 2.1 CONTACTS: 0.152μm [6μ"] GOLD PLATED ON CONTACT AREA, GOLD FLASH ON SOLDER TAIL, 1.27μm [50μ"] MIN. NICKEL UNDERPLATED OVERALL.
 2.2 SHELL: 0.508μm [20μ"] MIN. NICKEL PLATED.



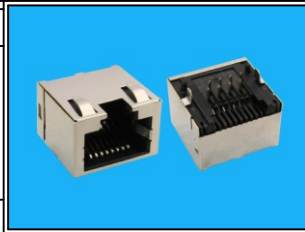
RECOMMENDED PCB LAYOUT
 PCB THICKNESS: 1.6mm
 TOLERANCE: ±0.05mm (TOP VIEW)

RoHS Compliant

TOLERANCES ARE



DRAWING BY CY		X, ±
CHECKED BY GENIUS		.X ± 0.25
UNIT / mm	SCALE 1 : 1	.XX ± 0.13
DATE		.XXX ± 0.05
SIZE A4	PJECTION	ANG ±



ORDER INFORMATION

MJF11U-KT06B3-0808-LF
 SERIES | | | | | | | | LEADFREE
 | | | | | | | | 8P8C
 | | | | | | | | REAR TAB 3.43mm
 | | | | | | | | 06u" GOLD
 | | | | | | | | TOP SPRING
 | | | | | | | | BLACK

DESCRIPTION: RJ45 RECEPTACLE CONNECTOR WITH SHELL, DIP TYPE

www.morethanall.com