

SECTION C-C

Material

- Item (a) Terminal body (metal housing): Brass (Cu Zn)
- Item (b) Terminal screw: Steel Zinc plating "-" slot type
- Item (c) Wire guard: PhBz, tin plated
- Item (d) Terminal (housing): Thermoplastic (UL94V-0)

Electrical cULus TUV

- Voltage rating: 300VAC / 300VAC
- Current rating: 10A / 10A
- Wire range: 0.2-2.5mm
- Solid wire (AWG): 14-26/14-26
- Stranded wire (AWG): 14-26/14-26
- Torque: 3.5Lb-In / 0.4Nm
- Screw: M2.6
- Wire strip length: 6-7mm
- Withstanding Voltage: 1.6KV/2.5KV
- Operating temperature: -40°C to +115°C
- Safety Approval: F789XV 789
- Critical dimension:

N= Number of poles

Dimension	Poles	Tolerance
Dim L N×5.0	2P-6P	±0.15
Dim B (N-1)×5.0	7P-12P	±0.20
	13P-18P	±0.25
	19P-24P	±0.30

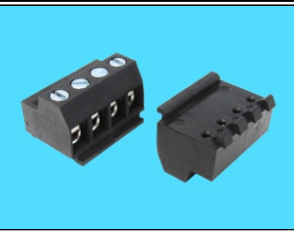
RoHS Compliant

TOLERANCES ARE

煜倫股份有限公司

www.morethanall.com

DRAWING BY CY		X. ± .X ± .XX ± .XXX ± ANG ±
CHECKED BY GENIUS		
UNIT / mm	SCALE 1 : 1	
DATE		
SIZE A4	PJECTION	



ORDER INFORMATION

TBN050-SW125-xx-LF
 SERIES | LEADFREE
 | 02~24WAY
 | HIGH 12.5mm
 | SCREW WIRE
 FEMALE

DESCRIPTION: