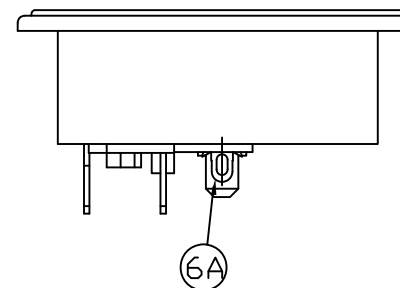


規格  
SPECIFICATIONS

- 額定  
1.RATING : 10A 250VAC
- 耐電壓  
2.WITHSTAND VOLTAGE : AC 2000V 1min
- 絕緣電阻  
3.INSULATION RESISTANCE : MORE THAN 100M (at DC 500V)
- △ 操作溫度  
4.OPERATING TEMPERATURE : -25° C TO +85° C (MAX)
- △ 認可安規 : 5.SAFETY



7A	CONNECTOR	1	Bsp1-1/2H	t=0.8	Sn-plated
6B	FUSE HOLDER	1	Bsp1-1/2H	t=0.8	Sn-plated
6A	FUSE HOLDER(SHORT)	1	Bsp1-1/2H	t=0.5	Sn-plated
4F	CONNECTION TERMINAL	2	Bsp1-1/2H	t=0.8	Sn-plated
3B	CENTER TERMINAL	1	Bsp1-1/2H	t=2.0	Sn-plated
2B	EDGE TERMINAL	2	Bsp1-1/2H	t=2.0	Sn-plated
1J	FUSE COVER	1	Nylon#66	94v-2	
1K	BODY	1	Nylon#66	94v-2	

RoHS Compliant

TOLERANCES ARE

**MORETHANALL**  
PCB CONNECTORS  
Cable ASSEMBLIES  
煜倫股份有限公司

DRAWING BY CY  
CHECKED BY GENIUS  
UNIT / mm SCALE 1 : 1  
DATE

X, ±  
.X ±  
.XX ±  
.XXX ±  
ANG ±

SIZE A4 PROJECTION



ORDER INFORMATION

ACF-PQ4FSSWPE-03-LF  
SERIES | MALE | FUSE | EAR PANEL | SWITCH | LEADFREE | 03 WAY

DESCRIPTION:

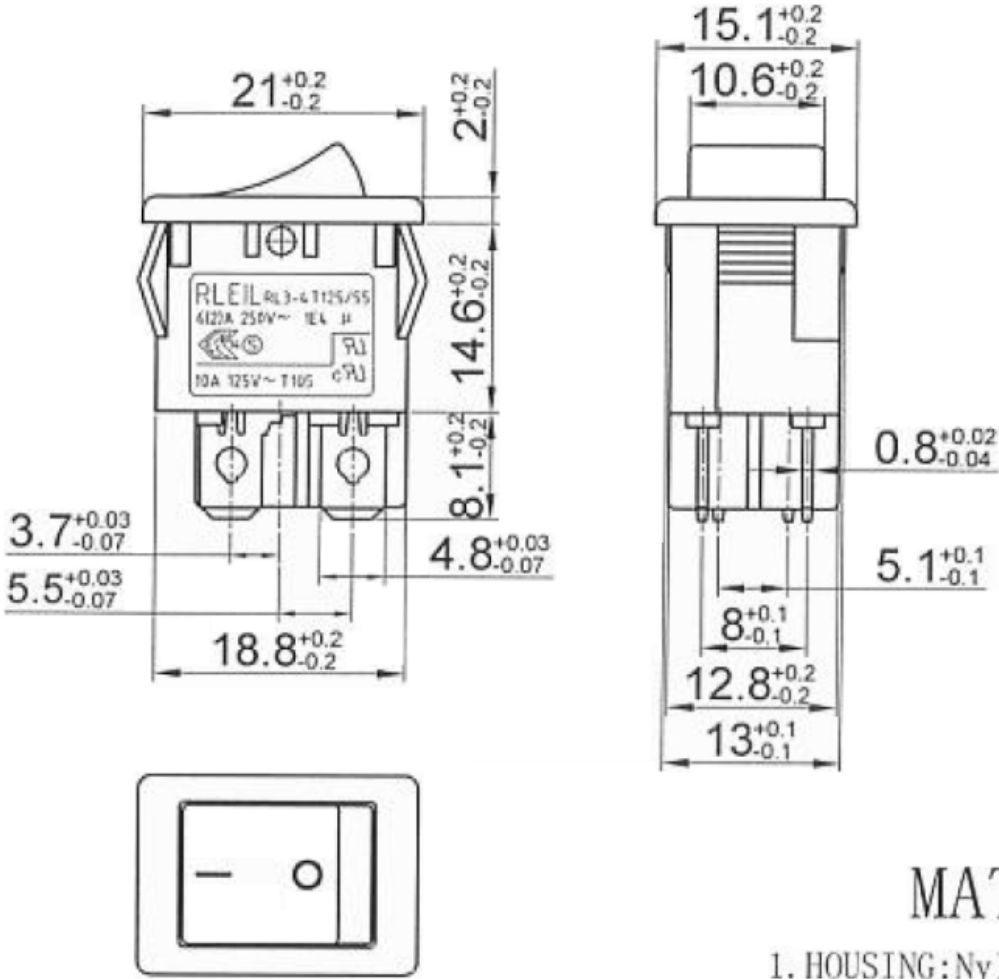
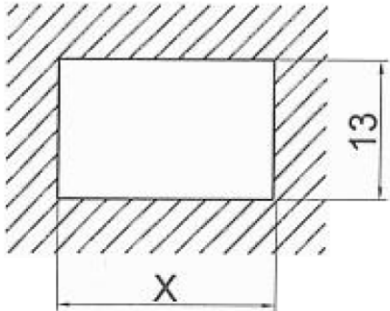
www.morethanall.com

# SPECIFICATION

1. RATING: 10A 125VAC UL C-UL  
6(2)A 250VAC T125/55 1E4  
ENEC SEMKO
2. CIRCUIT: ON-OFF W/Lamp DPST 4P
3. CONTACT RESISTANCE: 30m OHMS Max
4. INSULATION RESISTANCE: DC500V 100M OHMS Min
5. WITHSTAND VOLTAGE: AC 1500V 1 Minute
6. ELECTRICAL LIFE: 10000 Cycles at Full Load
7. OPERATION FORCE: 800~1200gf
8. OPERATION TEMPERATURE RANGE: -25~125° C

# PANEL HOLE SIZE

Panel thickness	X
0.75-1.25	19.2
1.25-2.0	19.4
2.0-3.0	19.6



# MATERIALS

1. HOUSING: Nylon #66 UL 94V-2
2. ROCKER: PC UL 94HB
3. TERMINAL: Copper Alloy Sn or Ag plated
4. CONTACTOR: AgSnO<sub>2</sub>In<sub>2</sub>O<sub>3</sub> (10) /Cu

RoHS Compliant

TOLERANCES ARE

**MORETHANALL**  
PCB CONNECTORS  
Cable ASSEMBLIES

煜倫股份有限公司

www.morethanall.com

DRAWING BY CY

CHECKED BY GENIUS

UNIT / mm

SCALE 1 : 1

DATE

SIZE A4

P PROJECTION

X, ±  
.X ±  
.XX ±  
.XXX ±  
ANG ±



ORDER INFORMATION

ACF-PQ4FSSWPE-03-LF  
SERIES | | | | LEADFREE  
MALE | | | | 03 WAY  
4.8mm TAB | | | | EAR  
FUSE | | | | PANEL  
SWITCH

DESCRIPTION: