

MAXIMUM ELECTRIC CURRENT

A. W. G	22	20	18	16
MAX AMP	9	12	17	19

NOTE:

1. BRAZED SEAM
2. WIRE RANGE: 22-16 AWG / 0.5-1.5 mm²

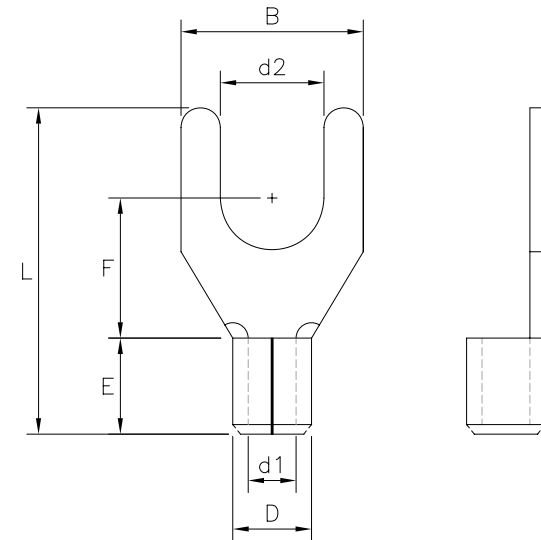
MATERIAL

INSULATION: NON

MATERIAL: COPPER

TIN PLATING

WIRE RANGE AWG/mm ²	產品編號 ITEM NO.	d2 ±0.20	B ±0.20	F ±0.30	L ±1.00	E ±0.60	D ±0.30	d1 ±0.20
22-16 AWG 0.5-1.5 mm ²	YT-X32S-16	3.2	5.0	6.3	16.0	5.0	3.4	1.7
	YT-X32N-16	3.2	5.8	6.3	16.0			
	YT-X37S-16	3.7	5.8	6.3	16.0			
	YT-X37M-16	3.7	6.4	6.3	15.6			
	YT-X37L-16	3.7	7.2	6.3	16.0			
	YT-X43S-16	4.3	6.4	6.3	15.6			
	YT-X43M-16	4.3	7.2	6.3	16.0			
	YT-X43L-16	4.3	8.0	7.0	16.0			
	YT-X53S-16	5.3	8.0	7.0	16.0			
	YT-X53L-16	5.3	9.5	7.0	16.0			
	YT-X65S-16	6.5	9.5	7.0	16.0			
	YT-X65L-16	6.5	12.0	11.0	22.2			
	YT-X84N-16	8.4	12.0	11.0	22.2			



RoHS Compliant

TOLERANCES ARE

MORETHANALL
PCB CONNECTORS
Cable ASSEMBLIES

DRAWING BY CY

X.±

CHECKED BY GENIUS

.X±

UNIT / mm

SCALE 1:1

.XXX±

DATE

ANG±

SIZE A4

PPOJECTION

照片框

ORDER INFORMATION

YT-Xxyy-16-LF

SERIES | LEADFREE
16-22AWG
BLANK:STANDARD
S.M.L.N/ B WIDTH
NON PVC 32:d2 3.2mm
37:d2 3.7mm

DESCRIPTION:

煜倫股份有限公司

www.morethanall.com