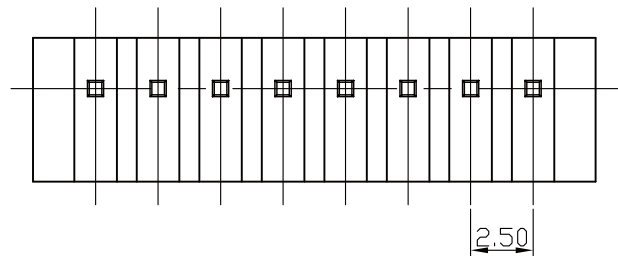
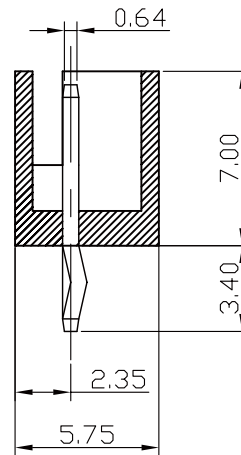
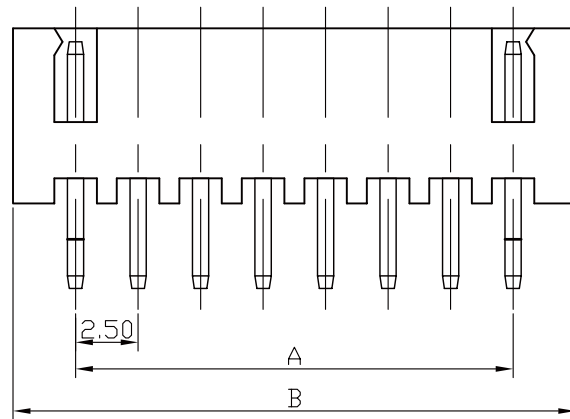


RECOMMENDED P.C.BOARD HOLE DIMM.



### Specifications

Current Rating: 3A AC, DC  
 Voltage Rating: 250V AC Maximum  
 Operating Temp: -25°C ~ +85°C  
 Contact Resistance: 10MΩ Max  
 Insulation Resistance: 1000MΩ Min  
 Terminal Material: Brass/Tin-plated  
 Material: Nylon 66, UL94V-0

Poles	Dimension mm (in.)		Part No.	Note.
	A	B		
2	2.50 (0.098)	7.50 (0.295)	XH-DK-02	
3	5.00 (0.197)	10.00 (0.394)	XH-DK-03	
4	7.50 (0.295)	12.50 (0.492)	XH-DK-04	
5	10.00 (0.394)	15.00 (0.591)	XH-DK-05	
6	12.50 (0.492)	17.50 (0.689)	XH-DK-06	
7	15.00 (0.591)	20.00 (0.787)	XH-DK-07	
8	17.50 (0.689)	22.50 (0.886)	XH-DK-08	
9	20.00 (0.787)	25.00 (0.984)	XH-DK-09	
10	22.50 (0.886)	27.50 (1.802)	XH-DK-10	
11	25.00 (0.984)	30.00 (1.181)	XH-DK-11	
12	27.50 (1.802)	32.50 (1.280)	XH-DK-12	

RoHS Compliant

TOLERANCES ARE

**MORETHANALL**  
 PCB CONNECTORS  
 Cable ASSEMBLIES

煜倫股份有限公司

www.morethanall.com

DRAWING BY CY

CHECKED BY GENIUS

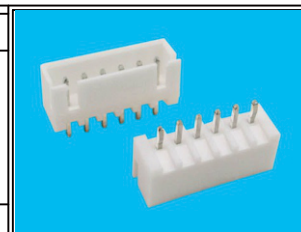
UNIT / mm SCALE 1 : 1

DATE

SIZE A4

X, ±  
 .X ±  
 .XX ±  
 .XXX ±  
 ANG ±

P PROJECTION



### ORDER INFORMATION

XH-DK-xx-LF  
 SERIES | LEADFREE  
 | 02-12 WAY  
 | KINK  
 | DIP 180°

DESCRIPTION: