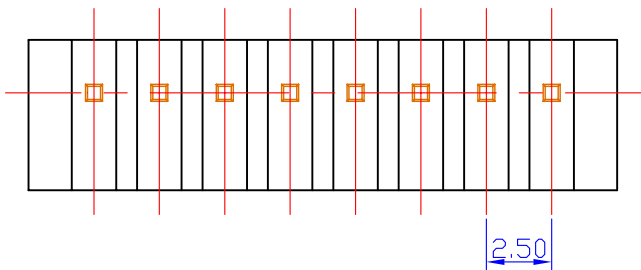
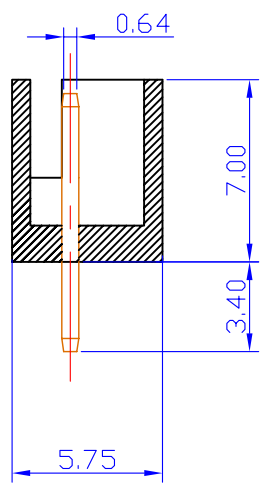
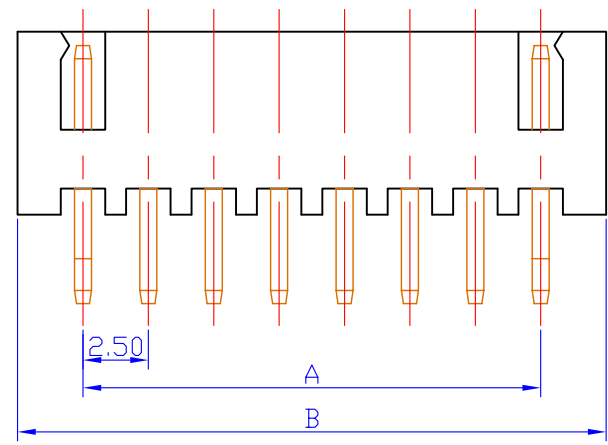


RECOMMENDED P.C. BOARD HOLE DIMM.



Specifications

Current Rating: 3A AC, DC
 Voltage Rating: 250V AC Maximum
 Operating Temp: -25°C ~ +85°C
 Contact Resistance: 10mΩ Max
 Insulation Resistance: 1000MΩ Min
 Terminal Material: Brass/Tin-plated
 Material: Nylon 66, UL94V-0+GF

Poles	Dimension mm (in.)	
	A	B
2	2.50 (0.098)	7.60 (0.295)
3	5.00 (0.197)	10.10 (0.394)
4	7.50 (0.295)	12.60 (0.492)
5	10.00 (0.394)	15.10 (0.591)
6	12.50 (0.492)	17.60 (0.689)
7	15.00 (0.591)	20.10 (0.787)
8	17.50 (0.689)	22.60 (0.886)
9	20.00 (0.787)	25.10 (0.984)
10	22.50 (0.886)	27.60 (1.802)
11	25.00 (0.984)	30.10 (1.181)
12	27.50 (1.802)	32.60 (1.280)

RoHS Compliant

TOLERANCES ARE



DRAWING BY CY

CHECKED BY GENIUS

UNIT / mm

SCALE 1 : 1

DATE

SIZE A4

X. ±
 .X ± 0.35
 .XX ± 0.25
 .XXX ±
 ANG ±

PJECTION

照片框

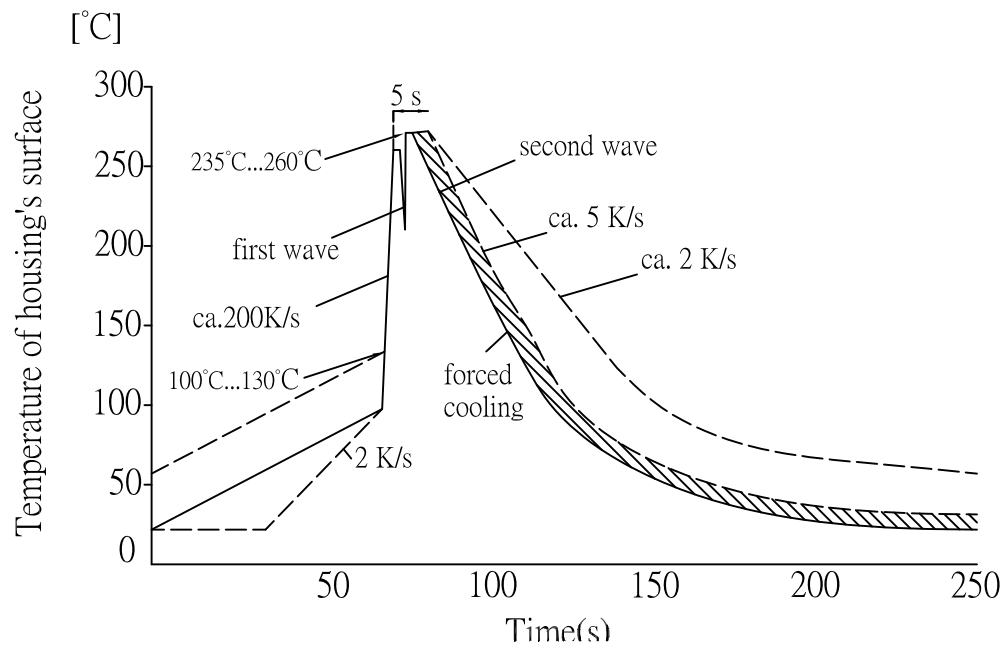
ORDER INFORMATION

XH-DGF-xx-LF
 SERIES | LEADFREE
 | 02~12WAY
 | GLASS FIBER
 | DIP 180°

DESCRIPTION: 2.5mm Wire-to-Board Header DIP 180° Type

煜倫股份有限公司

www.morethanall.com



Double-Wave soldering, Temperature/Time-Profile (Lead-Temperature)

Max temperature: 260°C

Typical process: solid line

Process limits: dotted line