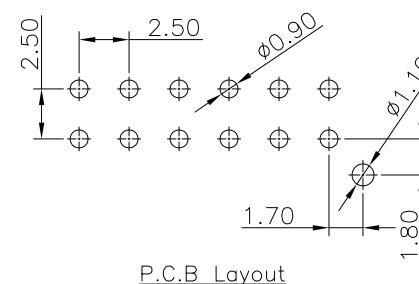
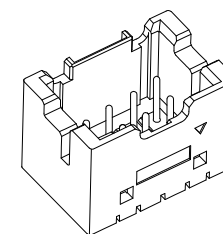


Pin.No	Dim.A	Dim.B	Dim.C
8	7.50	15.00	11.50
10	10.00	17.50	14.00
12	12.50	20.00	16.50
14	15.00	22.50	19.00
16	17.50	25.00	21.50
18	20.00	27.50	24.00
20	22.50	30.00	26.50
22	25.00	32.50	29.00
24	27.50	35.00	31.50
26	30.00	37.50	34.00
30	35.00	42.50	39.00
32	37.50	45.00	41.50
34	40.00	47.50	44.00
36	42.50	50.00	46.50
40	47.50	55.00	51.50

Specifications:  
 Current Rating: 3.0A AC,DC  
 Voltage Rating: 250V AC,DC  
 Contact Resistance: 20m ohm.Max  
 Insulation Resistance: 1000M ohm.Min  
 Withstanding Voltage: 1000V AC/Minute  
 Operating Temperature Range: -25°C ~ +105°C

Material And Finish:  
 Insulator: Nylon 46 (UL94V-0)  
 Insulator Color: White  
 Contact: Brass  
 Plated: Tin Plated



RoHS Compliant

TOLERANCES ARE

**MORETHANALL**  
 PCB CONNECTORS  
 Cable ASSEMBLIES

DRAWING BY CY

CHECKED BY GENIUS

UNIT / mm SCALE 1 : 1

DATE

SIZE A4

X. ±  
 .X ± 0.40  
 .XX ± 0.25  
 .XXX ±  
 ANG ±

照片框

ORDER INFORMATION

XAD-DP-xx-LF  
 SERIES | LEADFREE  
 | 08~40 WAY  
 | POST  
 | DIP 180°

煜倫股份有限公司

www.morethanall.com

PJECTION

DESCRIPTION: 2.5mm Wire To Board Wafer Straight Type