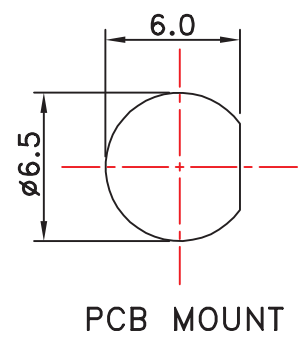


***NOTES:

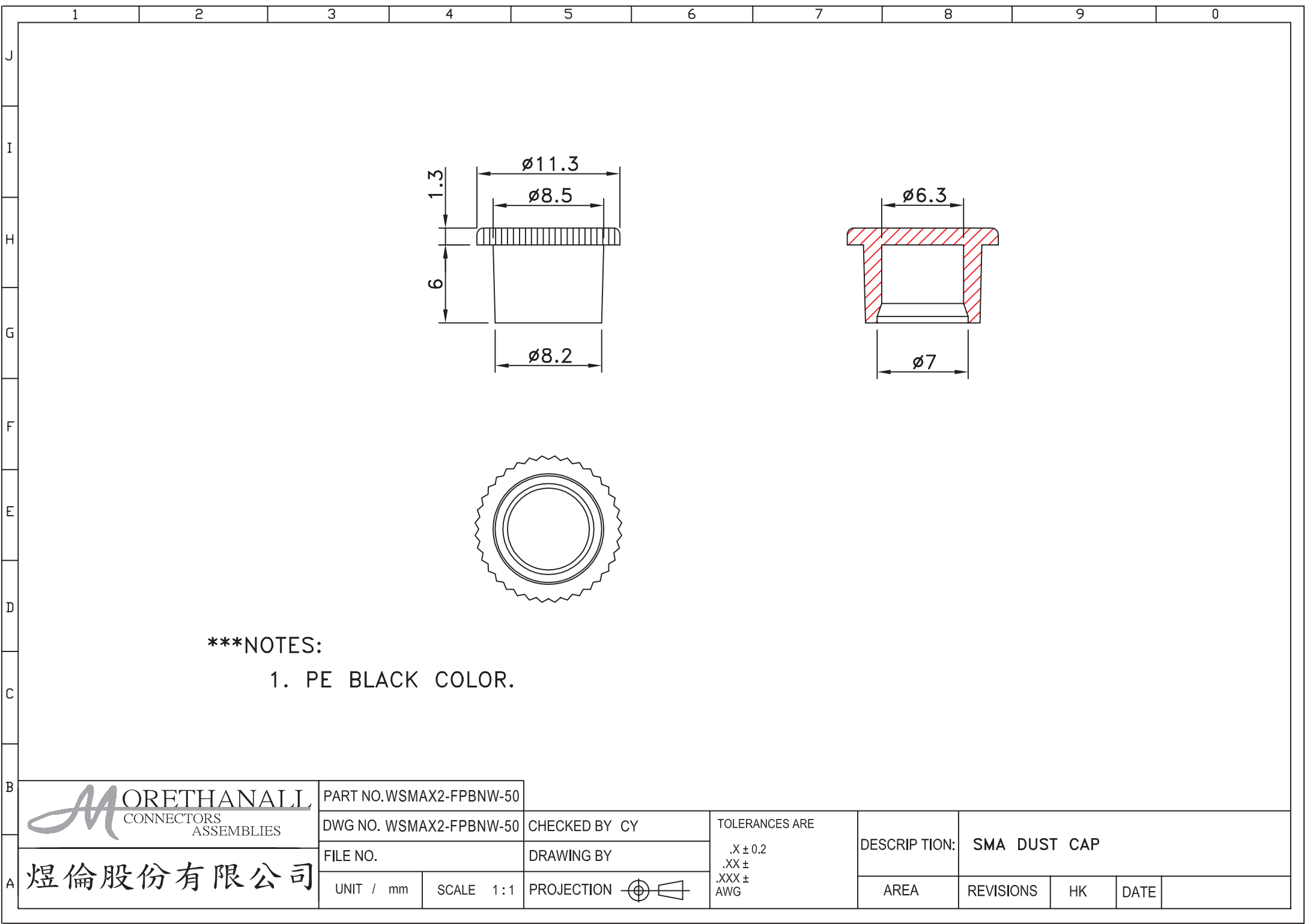
- 1.CONTACT: BRASS/GOLD.
- 2.INSULATION: PTFE/NATURE.
- 3.BODY: BRASS/GOLD.
- 4.RUBBER SEAL: EPDM/RED COLOR.
- 5.NUT: BRASS/NICKEL.
- 6.TEETH WASHER: STEEL/NICKEL.



WSMAX2-FPBNW-50-LF
LEADFREE

RoHS Compliant

	PART NO. WSMAX2-FPBNW-50		TOLERANCES ARE .X ± 0.2 .XX ± .XXX ± AWG	DESCRIPTION: SMA JACK TO SMA JACK BULKHEAD ADAPTOR		
	DWG NO. WSMAX2-FPBNW-50			CHECKED BY CY	AREA	REVISIONS
焜倫股份有限公司	FILE NO.		DRAWING BY			
	UNIT / mm	SCALE 1:1	PROJECTION			



***NOTES:

1. PE BLACK COLOR.



PART NO. WSMAX2-FPBNW-50

DWG NO. WSMAX2-FPBNW-50

FILE NO.

CHECKED BY CY

DRAWING BY

TOLERANCES ARE

.X ± 0.2
.XX ±
.XXX ±
AWG

DESCRIPTION: SMA DUST CAP

煜倫股份有限公司

UNIT / mm

SCALE 1:1

PROJECTION

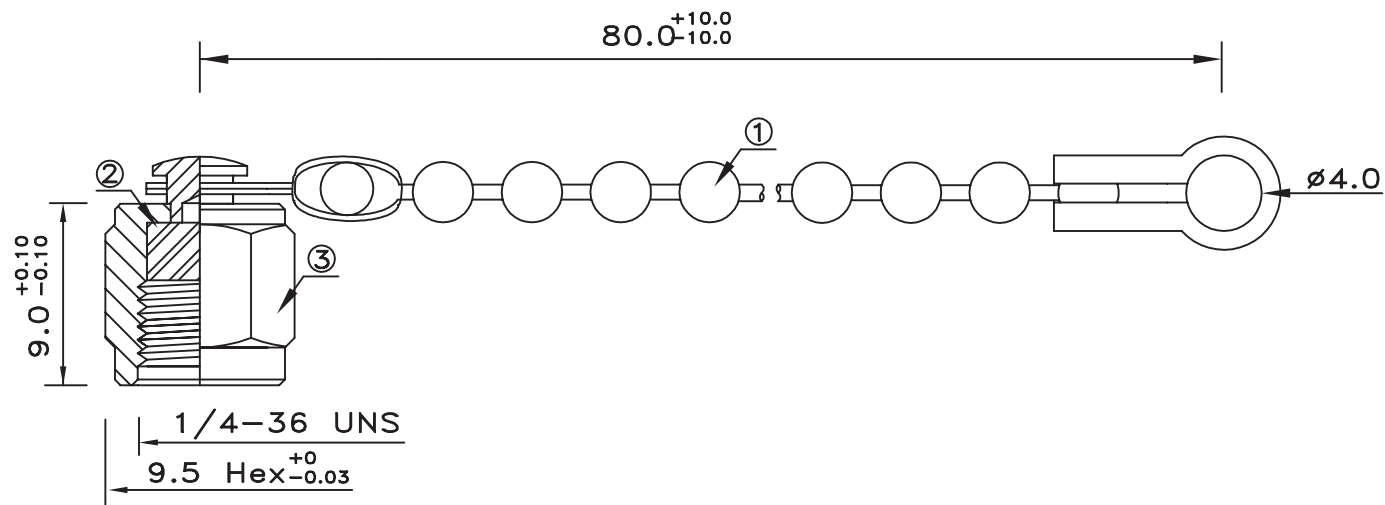


AREA

REVISIONS

HK

DATE



***NOTES:

1. BRASS WITH NICKEL PLATED.
2. RUBBER SILICON RED COLOR.
3. BRASS WITH NICKEL PLATED.

MORETHANALL
CONNECTORS
ASSEMBLIES

PART NO. WSMAX2-FPBNW-50

DWG NO. WSMAX2-FPBNW-50

FILE NO.

UNIT / mm

SCALE 1:1

CHECKED BY CY

DRAWING BY

PROJECTION



TOLERANCES ARE

.X ± 0.2
.XX ±
.XXX ±
AWG

DESCRIPTION:

SMA PROTECTIVE CAP FOR JACK WITH CHAIN

AREA

REVISIONS

HK

DATE

煜倫股份有限公司